

Datasheet for ABIN954771
anti-SFTP A2 antibody (C-Term)[Go to Product page](#)

1 Image

Overview

Quantity:	0.4 mL
Target:	SFTP A2
Binding Specificity:	AA 173-202, C-Term
Reactivity:	Human
Host:	Rabbit
Clonality:	Polyclonal
Conjugate:	This SFTP A2 antibody is un-conjugated
Application:	Western Blotting (WB), Enzyme Immunoassay (EIA)

Product Details

Immunogen:	KLH conjugated synthetic peptide between 173-202 amino acids from the C-terminal region of Human SFTP A2B Genename: SFTP A2
Isotype:	Ig Fraction
Specificity:	Recognizes SFTP A2B (C-term).
Purification:	Protein A column followed by peptide Affinity purification

Target Details

Target:	SFTP A2
Alternative Name:	SFTP A2B (SFTP A2 Products)
Background:	This gene is one of several genes encoding pulmonary-surfactant associated proteins (SFTP A)

Target Details

located on chromosome 10. Mutations in this gene and a highly similar gene located nearby, which affect the highly conserved carbohydrate recognition domain, are associated with idiopathic pulmonary fibrosis. The current version of the assembly displays only a single centromeric SFTPA gene pair rather than the two gene pairs shown in the previous assembly which were thought to have resulted from a duplication. Synonyms: COLEC5, PSAP, Pulmonary surfactant-associated protein A2, SFTP1, SFTPA, SFTPA2

Gene ID: 729238

NCBI Accession: [NP_001092138](#)

Application Details

Application Notes: Optimal working dilution should be determined by the investigator.

Restrictions: For Research Use only

Handling

Format: Liquid

Concentration: 0.25 mg/mL

Buffer: PBS with 0.09 % (W/V) Sodium Azide as preservative

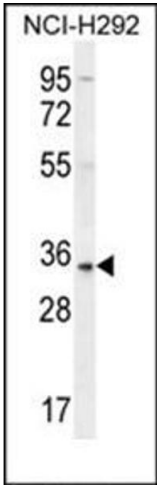
Preservative: Sodium azide

Precaution of Use: This product contains sodium azide: a POISONOUS AND HAZARDOUS SUBSTANCE which should be handled by trained staff only.

Handling Advice: Avoid repeated freezing and thawing.

Storage: 4 °C/-20 °C

Storage Comment: Store the antibody undiluted at 2-8 °C for one month or (in aliquots) at -20 °C for longer.



Western Blotting

Image 1. Western blot analysis using SFTP2B Antibody (C-term) Cat.-No AP53884PU-N in NCI-H292 cell line lysates (35ug/lane). This demonstrates the SFTP2B antibody detected the SFTP2B protein (arrow).