



[Go to Product page](#)

Datasheet for ABIN954777
anti-SGIP1 antibody (N-Term)

1 Image

Overview

Quantity:	0.4 mL
Target:	SGIP1
Binding Specificity:	AA 1-30, N-Term
Reactivity:	Human, Mouse
Host:	Rabbit
Clonality:	Polyclonal
Conjugate:	This SGIP1 antibody is un-conjugated
Application:	Western Blotting (WB), Enzyme Immunoassay (EIA)

Product Details

Immunogen:	KLH conjugated synthetic peptide between 1~30 amino acids from the N-terminal region of Human SGIP1 Genename: SGIP1
Isotype:	Ig Fraction
Specificity:	Recognizes SGIP1 Antibody (N-term).
Purification:	Protein A column followed by peptide Affinity purification

Target Details

Target:	SGIP1
Alternative Name:	SGIP1 (SGIP1 Products)
Background:	SGIP1 functions as an endocytic protein that affects signaling by receptors in neuronal systems

Target Details

involved in energy homeostasis via its interaction with endophilins (see SH3GL3, MIM 603362) (Trevaskis et al., 2005 [PubMed 15919751] and Uezu et al., 2007 [PubMed 17626015])Synonyms: Endophilin-3-interacting protein, SH3-containing GRB2-like protein 3-interacting protein 1

Gene ID: 84251

NCBI Accession: [NP_115667](#)

Pathways: [Feeding Behaviour](#)

Application Details

Application Notes: Optimal working dilution should be determined by the investigator.

Restrictions: For Research Use only

Handling

Format: Liquid

Concentration: 0.25 mg/mL

Buffer: PBS with 0.09 % (W/V) Sodium Azide as preservative

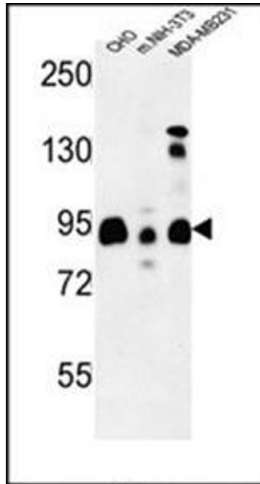
Preservative: Sodium azide

Precaution of Use: This product contains sodium azide: a POISONOUS AND HAZARDOUS SUBSTANCE which should be handled by trained staff only.

Handling Advice: Avoid repeated freezing and thawing.

Storage: 4 °C/-20 °C

Storage Comment: Store the antibody undiluted at 2-8 °C for one month or (in aliquots) at -20 °C for longer.



Western Blotting

Image 1. Western blot analysis using SGIP1 Antibody (N-term) Cat.-No AP53888PU-N in CHO, MDA-MB231, Mouse NIH-3T3 cell line lysates (35ug/lane). This demonstrates the SGIP1 antibody detected the SGIP1 protein (arrow).