



[Go to Product page](#)

Datasheet for ABIN954781

anti-Sphingomyelin Synthase 2 antibody (C-Term)

1 Image

Overview

Quantity:	0.4 mL
Target:	Sphingomyelin Synthase 2 (SGMS2)
Binding Specificity:	C-Term
Reactivity:	Human, Mouse
Host:	Rabbit
Clonality:	Polyclonal
Conjugate:	This Sphingomyelin Synthase 2 antibody is un-conjugated
Application:	Western Blotting (WB), Enzyme Immunoassay (EIA)

Product Details

Immunogen:	KLH conjugated synthetic peptide selected from the C-terminal region of Human SGMS2. Genename: SGMS2
Isotype:	Ig Fraction
Specificity:	Recognizes SGMS2 (C-term).
Purification:	Protein A column followed by peptide Affinity purification

Target Details

Target:	Sphingomyelin Synthase 2 (SGMS2)
Alternative Name:	SGMS2 (SGMS2 Products)
Background:	Sphingomyelin, a major component of cell and Golgi membranes, is made by the transfer of

Target Details

phosphocholine from phosphatidylcholine onto ceramide, with diacylglycerol as a side product. SGMS2 is an enzyme that catalyzes this reaction primarily at the cell membrane. The synthesis is reversible, and this enzyme can catalyze the reaction in either direction. This protein is required for cell growth. Synonyms: SMS2, Sphingomyelin synthase 2

Gene ID: 166929

NCBI Accession: [NP_001129729](#)

Application Details

Application Notes: Optimal working dilution should be determined by the investigator.

Restrictions: For Research Use only

Handling

Format: Liquid

Concentration: 0.25 mg/mL

Buffer: PBS with 0.09 % (W/V) Sodium Azide as preservative

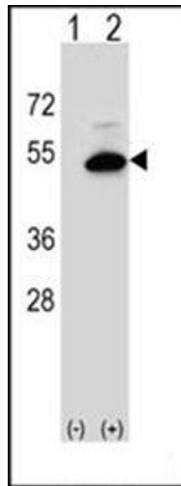
Preservative: Sodium azide

Precaution of Use: This product contains sodium azide: a POISONOUS AND HAZARDOUS SUBSTANCE which should be handled by trained staff only.

Handling Advice: Avoid repeated freezing and thawing.

Storage: 4 °C/-20 °C

Storage Comment: Store the antibody undiluted at 2-8 °C for one month or (in aliquots) at -20 °C for longer.



Western Blotting

Image 1. Western blot analysis of SGMS2 (arrow) using SGMS2 Antibody (C-term) Cat.-No AP53889PU-N. 293 cell lysates (2 ug/lane) either nontransfected (Lane 1) or transiently transfected (Lane 2) with the SGMS2 gene.