



[Go to Product page](#)

Datasheet for ABIN954782

anti-SGPL1 antibody (N-Term)

2 Images

Overview

Quantity:	0.4 mL
Target:	SGPL1
Binding Specificity:	AA 79-109, N-Term
Reactivity:	Human
Host:	Rabbit
Clonality:	Polyclonal
Conjugate:	This SGPL1 antibody is un-conjugated
Application:	Western Blotting (WB), Immunohistochemistry (Paraffin-embedded Sections) (IHC (p)), Enzyme Immunoassay (EIA)

Product Details

Immunogen:	KLH conjugated synthetic peptide between 79-109 amino acids from the N-terminal region of Human SGPL1 Genename: SGPL1
Isotype:	Ig Fraction
Specificity:	Recognizes SGPL1 (N-term).
Purification:	Protein A column followed by peptide Affinity purification

Target Details

Target:	SGPL1
Alternative Name:	SGPL1 (SGPL1 Products)

Target Details

Background: SGPL1 cleaves phosphorylated sphingoid bases (PSBs), such as sphingosine-1-phosphate, into fatty aldehydes and phosphoethanolamine. Elevates stress-induced ceramide production and apoptosis. Synonyms: KIAA1252, SP-lyase 1, SPL 1, Sphingosine-1-phosphate aldolase, Sphingosine-1-phosphate lyase 1

Gene ID: 8879

NCBI Accession: [NP_003892](#)

Pathways: [Platelet-derived growth Factor Receptor Signaling](#)

Application Details

Application Notes: Optimal working dilution should be determined by the investigator.

Restrictions: For Research Use only

Handling

Format: Liquid

Concentration: 0.25 mg/mL

Buffer: PBS with 0.09 % (W/V) Sodium Azide as preservative

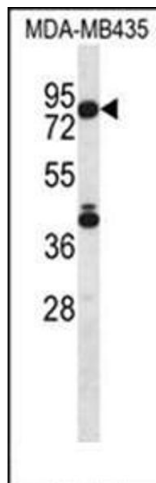
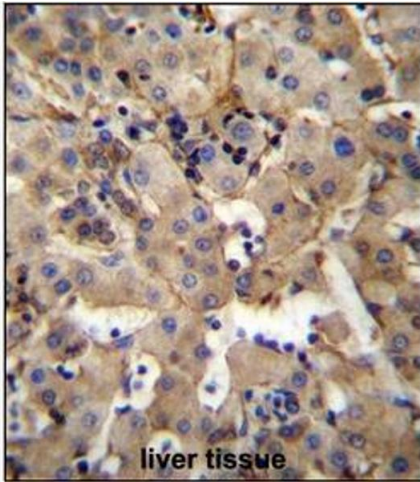
Preservative: Sodium azide

Precaution of Use: This product contains sodium azide: a POISONOUS AND HAZARDOUS SUBSTANCE which should be handled by trained staff only.

Handling Advice: Avoid repeated freezing and thawing.

Storage: 4 °C/-20 °C

Storage Comment: Store the antibody undiluted at 2-8 °C for one month or (in aliquots) at -20 °C for longer.



Immunohistochemistry (Paraffin-embedded Sections)

Image 1. Immunohistochemistry analysis in Formalin Fixed, Paraffin Embedded Human liver tissue stained with SGPL1 Antibody (N-term) followed by peroxidase conjugation of the secondary antibody and DAB staining. This data demonstrates the use of SGPL1 Antibody (N-term) for immunohistochemistry. Clinical relevance has not been evaluated.

Western Blotting

Image 2. Western blot analysis using SGPL1 Antibody (N-term) Cat.-No AP53891PU-N in MDA-MB435 cell line lysates (35ug/lane). This demonstrates the SGPL1 antibody detected the SGPL1 protein (arrow).