

Datasheet for ABIN954787

anti-SH2D4A antibody (N-Term)

2 Images

1 Publication

[Go to Product page](#)

Overview

Quantity:	0.4 mL
Target:	SH2D4A
Binding Specificity:	AA 45-75, N-Term
Reactivity:	Human
Host:	Rabbit
Clonality:	Polyclonal
Conjugate:	This SH2D4A antibody is un-conjugated
Application:	Western Blotting (WB), Immunohistochemistry (Paraffin-embedded Sections) (IHC (p)), Enzyme Immunoassay (EIA)

Product Details

Immunogen:	KLH conjugated synthetic peptide between 45-75 amino acids from the N-terminal region of Human SH2D4A Genename: SH2D4A
Isotype:	Ig Fraction
Specificity:	Recognizes SH2D4A (N-term).
Purification:	Protein A column followed by peptide Affinity purification

Target Details

Target:	SH2D4A
Alternative Name:	SH2D4A (SH2D4A Products)

Target Details

Background: SH2D4A inhibits estrogen-induced cell proliferation by competing with PLCG for binding to ESR1, blocking the effect of estrogen on PLCG and repressing estrogen-induced proliferation. May play a role in T-cell development and function. Synonyms: Protein SH(2)A, SH2 domain-containing protein 4A, SH2A

Gene ID: 63898

NCBI Accession: [NP_001167630](#)

Application Details

Application Notes: Optimal working dilution should be determined by the investigator.

Restrictions: For Research Use only

Handling

Format: Liquid

Concentration: 0.25 mg/mL

Buffer: PBS with 0.09 % (W/V) Sodium Azide as preservative

Preservative: Sodium azide

Precaution of Use: This product contains sodium azide: a POISONOUS AND HAZARDOUS SUBSTANCE which should be handled by trained staff only.

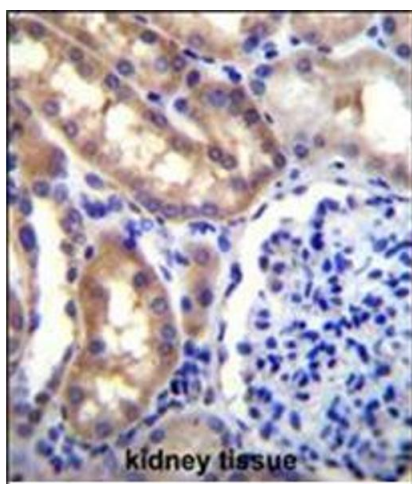
Handling Advice: Avoid repeated freezing and thawing.

Storage: 4 °C/-20 °C

Storage Comment: Store the antibody undiluted at 2-8 °C for one month or (in aliquots) at -20 °C for longer.

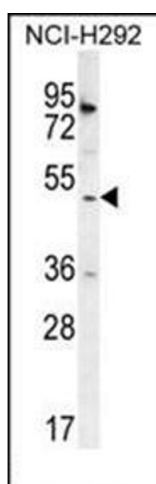
Publications

Product cited in: Gonçalves, Castro, Henriques, Oliveira, Pinheiro, Oliveira, Sreenu, Evans, Davis, Moreira, Carmo: "Molecular cloning and analysis of SSc5D, a new member of the scavenger receptor cysteine-rich superfamily." in: **Molecular immunology**, Vol. 46, Issue 13, pp. 2585-96, (2009) ([PubMed](#)).



Immunohistochemistry (Paraffin-embedded Sections)

Image 1. Immunohistochemistry analysis in Formalin Fixed, Paraffin Embedded Human kidney tissue stained with SH2D4A Antibody (N-term) followed by peroxidase conjugation of the secondary antibody and DAB staining. This data demonstrates the use of SH2D4A Antibody (N-term) for immunohistochemistry. Clinical relevance has not been evaluated.



Western Blotting

Image 2. Western blot analysis using SH2D4A Antibody (N-term) Cat.-No AP53897PU-N in NCI-H292 cell line lysates (35ug/lane). This demonstrates the SH2D4A antibody detected the SH2D4A protein (arrow).