



Datasheet for ABIN954788
anti-SH2D4B antibody (C-Term)



[Go to Product page](#)

3 Images

Overview

Quantity:	0.4 mL
Target:	SH2D4B
Binding Specificity:	AA 381-410, C-Term
Reactivity:	Human
Host:	Rabbit
Clonality:	Polyclonal
Conjugate:	This SH2D4B antibody is un-conjugated
Application:	Western Blotting (WB), Immunofluorescence (IF), Immunohistochemistry (Paraffin-embedded Sections) (IHC (p)), Enzyme Immunoassay (EIA)

Product Details

Immunogen:	KLH conjugated synthetic peptide between 381-410 amino acids from the C-terminal region of Human SH2D4B Genename: SH2D4B
Isotype:	Ig Fraction
Specificity:	Recognizes SH2D4B (C-term)
Purification:	Protein A column followed by peptide Affinity purification

Target Details

Target:	SH2D4B
Alternative Name:	SH2D4B (SH2D4B Products)

Target Details

Background: SH2D4B (SH2 domain containing 4B) is a 431 amino acid protein that contains one SH2 domain, exists as three alternatively spliced isoforms and is encoded by a gene that maps to human chromosome 10q23.1. Spanning nearly 135 million base pairs, chromosome 10 makes up approximately 4.5 % of total DNA in cells and encodes nearly 1,200 genes. Several protein-coding genes, including those that encode for chemokines, cadherins, excision repair proteins, early growth response factors (Egrs) and fibroblast growth receptors (FGFRs), are located on chromosome 10. Defects in some of the genes that map to chromosome 10 are associated with Charcot-Marie Tooth disease, Jackson-Weiss syndrome, Usher syndrome, nonsyndromic deafness, Wolman's syndrome, Cowden syndrome, multiple endocrine neoplasia type 2 and porphyria. Synonyms: SH2 domain-containing protein 4B

Gene ID: 387694

NCBI Accession: [NP_001139191](#)

Application Details

Application Notes: Optimal working dilution should be determined by the investigator.

Restrictions: For Research Use only

Handling

Format: Liquid

Concentration: 0.25 mg/mL

Buffer: PBS with 0.09 % (W/V) Sodium Azide as preservative

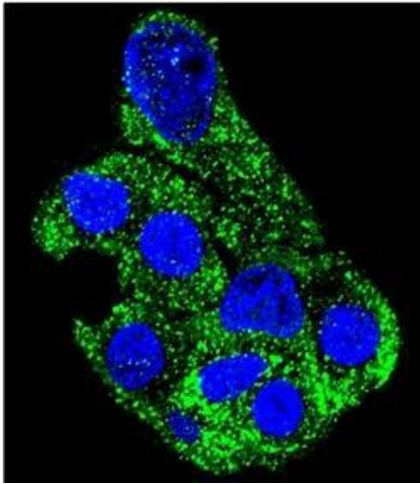
Preservative: Sodium azide

Precaution of Use: This product contains sodium azide: a POISONOUS AND HAZARDOUS SUBSTANCE which should be handled by trained staff only.

Handling Advice: Avoid repeated freezing and thawing.

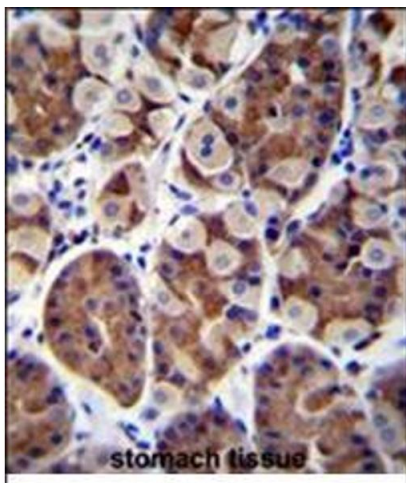
Storage: 4 °C/-20 °C

Storage Comment: Store the antibody undiluted at 2-8 °C for one month or (in aliquots) at -20 °C for longer.



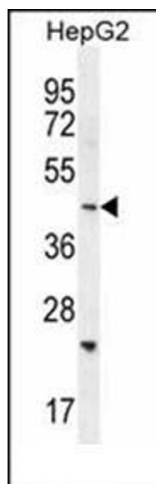
Immunofluorescence

Image 1. Confocal Immunofluorescent analysis of SH2D4B Antibody (C-term) Cat.-No AP53898PU-N with HepG2 cell followed by Alexa Fluor 488-conjugated Goat anti-Rabbit IgG (green). DAPI was used to stain the cell nuclear (blue).



Immunohistochemistry (Paraffin-embedded Sections)

Image 2. Immunohistochemistry analysis in Formalin Fixed, Paraffin Embedded Human stomach tissue stained with SH2D4B Antibody (C-term) followed by peroxidase conjugation of the secondary antibody and DAB staining. This data demonstrates the use of SH2D4B Antibody (C-term) for immunohistochemistry. Clinical relevance has not been evaluated.



Western Blotting

Image 3. Western blot analysis using SH2D4B Antibody (C-term) Cat.-No AP53898PU-N in HepG2 cell line lysates (35ug/lane). This demonstrates the SH2D4B antibody detected the SH2D4B protein (arrow).