

Datasheet for ABIN954791

anti-SH3BP2 antibody (Middle Region)



[Go to Product page](#)

1 Image

Overview

Quantity:	0.4 mL
Target:	SH3BP2
Binding Specificity:	AA 150-180, Middle Region
Reactivity:	Human, Mouse
Host:	Rabbit
Clonality:	Polyclonal
Conjugate:	This SH3BP2 antibody is un-conjugated
Application:	Western Blotting (WB), Enzyme Immunoassay (EIA)

Product Details

Immunogen:	KLH conjugated synthetic peptide between 150-180 amino acids from the Central region of Human SH3BP2 Genename: SH3BP2
Isotype:	Ig Fraction
Specificity:	Recognizes SH3BP2 (Center).
Purification:	Protein A column followed by peptide Affinity purification

Target Details

Target:	SH3BP2
Alternative Name:	SH3BP2 (SH3BP2 Products)
Background:	The protein encoded by this gene has an N-terminal pleckstrin homology (PH) domain, an SH3-

Target Details

binding proline-rich region, and a C-terminal SH2 domain. The protein binds to the SH3 domains of several proteins including the ABL1 and SYK protein tyrosine kinases , and functions as a cytoplasmic adaptor protein to positively regulate transcriptional activity in T, natural killer (NK), and basophilic cells. Mutations in this gene result in cherubism. Multiple transcript variants encoding different isoforms have been found for this gene.Synonyms: 3BP-2, 3BP2, SH3 domain-binding protein 2, SH3BP-2

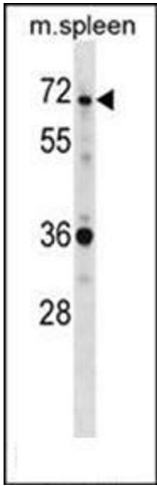
Gene ID:	6452
NCBI Accession:	NP_001116153
Pathways:	TCR Signaling

Application Details

Application Notes:	Optimal working dilution should be determined by the investigator.
Restrictions:	For Research Use only

Handling

Format:	Liquid
Concentration:	0.25 mg/mL
Buffer:	PBS with 0.09 % (W/V) Sodium Azide as preservative
Preservative:	Sodium azide
Precaution of Use:	This product contains sodium azide: a POISONOUS AND HAZARDOUS SUBSTANCE which should be handled by trained staff only.
Handling Advice:	Avoid repeated freezing and thawing.
Storage:	4 °C/-20 °C
Storage Comment:	Store the antibody undiluted at 2-8 °C for one month or (in aliquots) at -20 °C for longer.



Western Blotting

Image 1. Western blot analysis using SH3BP2 Antibody (Center) Cat.-No AP53901PU-N in Mouse spleen tissue lysates (35ug/lane).This demonstrates the SH3BP2 antibody detected the SH3BP2 protein (arrow).