

Datasheet for ABIN954792

anti-ARHGAP27 antibody (Middle Region)



[Go to Product page](#)

1 Image

Overview

Quantity:	0.4 mL
Target:	ARHGAP27
Binding Specificity:	AA 197-226, Middle Region
Reactivity:	Human
Host:	Rabbit
Clonality:	Polyclonal
Conjugate:	This ARHGAP27 antibody is un-conjugated
Application:	Western Blotting (WB), Enzyme Immunoassay (EIA)

Product Details

Immunogen:	KLH conjugated synthetic peptide between 197-226 amino acids from the Central region of Human SH3D20 Genename: ARHGAP27
Isotype:	Ig Fraction
Specificity:	Recognizes SH3D20 (Center).
Purification:	Protein A column followed by peptide Affinity purification

Target Details

Target:	ARHGAP27
Alternative Name:	SH3D20 (ARHGAP27 Products)
Background:	SH3D20 is a rho GTPase-activating protein which may be involved in clathrin-mediated

Target Details

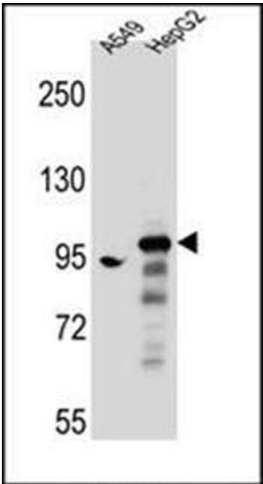
	endocytosis. GTPase activators for the Rho-type GTPases act by converting them to an inactive GDP-bound state. Has activity toward CDC42 and RAC1 (By similarity).Synonyms: ARHGAP27, CAMGAP1, Rho GTPase-activating protein 27
Gene ID:	201176
NCBI Accession:	NP_777579

Application Details

Application Notes:	Optimal working dilution should be determined by the investigator.
Restrictions:	For Research Use only

Handling

Format:	Liquid
Concentration:	0.25 mg/mL
Buffer:	PBS with 0.09 % (W/V) Sodium Azide as preservative
Preservative:	Sodium azide
Precaution of Use:	This product contains sodium azide: a POISONOUS AND HAZARDOUS SUBSTANCE which should be handled by trained staff only.
Handling Advice:	Avoid repeated freezing and thawing.
Storage:	4 °C/-20 °C
Storage Comment:	Store the antibody undiluted at 2-8 °C for one month or (in aliquots) at -20 °C for longer.



Western Blotting

Image 1. Western blot analysis using SH3D20 Antibody (Center) . This demonstrates the SH3D20 antibody detected the SH3D20 protein (arrow).