



[Go to Product page](#)

Datasheet for ABIN954799

## anti-SHISA6 antibody (N-Term)

### 2 Images

#### Overview

Quantity:	0.4 mL
Target:	SHISA6
Binding Specificity:	AA 88-118, N-Term
Reactivity:	Human
Host:	Rabbit
Clonality:	Polyclonal
Conjugate:	This SHISA6 antibody is un-conjugated
Application:	Western Blotting (WB), Immunohistochemistry (Paraffin-embedded Sections) (IHC (p)), Enzyme Immunoassay (EIA)

#### Product Details

Immunogen:	KLH conjugated synthetic peptide between 88-118 amino acids from the N-terminal region of Human SHISA6. Genename: SHISA6
Isotype:	Ig Fraction
Specificity:	This antibody recognizes Human SHISA6 (N-term).
Purification:	Affinity Chromatography on Protein A

#### Target Details

Target:	SHISA6
Alternative Name:	SHISA6 ( <a href="#">SHISA6 Products</a> )

## Target Details

Background: Synonyms: Protein shisa-6 homolog

Molecular Weight: 55764 Da

Gene ID: 388336

NCBI Accession: [NP\\_001166932](#)

## Application Details

Application Notes: Optimal working dilution should be determined by the investigator.

Restrictions: For Research Use only

## Handling

Format: Liquid

Concentration: 0.25 mg/mL

Buffer: PBS, 0.09 % Sodium Azide

Preservative: Sodium azide

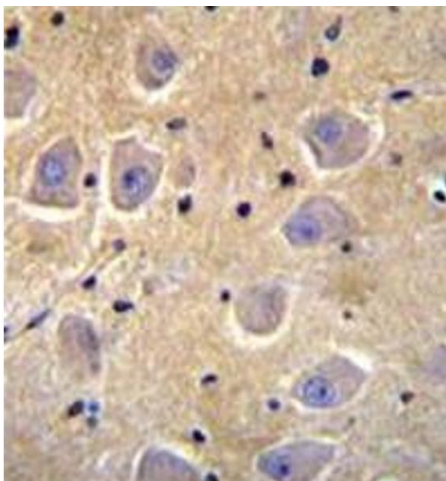
Precaution of Use: This product contains sodium azide: a POISONOUS AND HAZARDOUS SUBSTANCE which should be handled by trained staff only.

Handling Advice: Avoid repeated freezing and thawing.

Storage: 4 °C/-20 °C

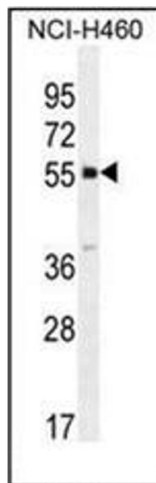
Storage Comment: Store undiluted at 2-8 °C for one month or (in aliquots) at -20 °C for longer.

## Images



### Immunohistochemistry (Paraffin-embedded Sections)

**Image 1.** Formalin fixed, paraffin embedded human brain tissue stained with SHISA6 Antibody (N-term) followed by peroxidase conjugation of the secondary antibody and DAB staining.



### Western Blotting

**Image 2.** Western blot analysis of SHISA6 Antibody (N-term) in NCI-H460 cell line lysates (35ug/lane). This demonstrates the SHISA6 antibody detected the SHISA6 protein (arrow).