



[Go to Product page](#)

Datasheet for ABIN954800
anti-SHQ1 antibody (N-Term)

2 Images

Overview

| | |
|----------------------|---|
| Quantity: | 0.4 mL |
| Target: | SHQ1 |
| Binding Specificity: | AA 65-94, N-Term |
| Reactivity: | Human, Mouse |
| Host: | Rabbit |
| Clonality: | Polyclonal |
| Conjugate: | This SHQ1 antibody is un-conjugated |
| Application: | Western Blotting (WB), Enzyme Immunoassay (EIA) |

Product Details

| | |
|---------------|--|
| Immunogen: | KLH conjugated synthetic peptide between 65-94 amino acids from the N-terminal region of Human SHQ1. Genename: SHQ1. |
| Isotype: | Ig Fraction |
| Specificity: | This antibody recognizes Mouse SHQ1 (N-term). |
| Purification: | Affinity Chromatography on Protein A |

Target Details

| | |
|-------------------|--|
| Target: | SHQ1 |
| Alternative Name: | SHQ1 (SHQ1 Products) |
| Background: | Synonyms: Protein SHQ1 homolog |

Target Details

| | |
|-------------------|--|
| Molecular Weight: | 65125 Da |
| Gene ID: | 55164 |
| NCBI Accession: | NP_060600 |
| Pathways: | Ribonucleoprotein Complex Subunit Organization |

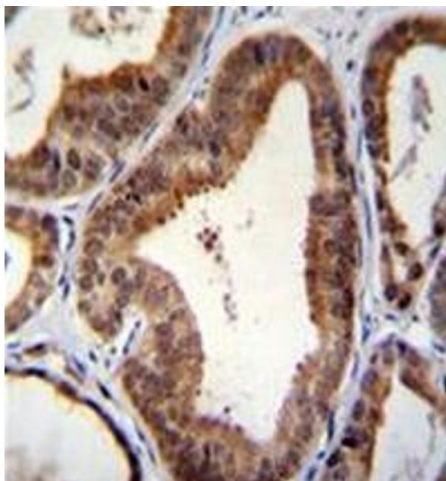
Application Details

| | |
|--------------------|--|
| Application Notes: | Optimal working dilution should be determined by the investigator. |
| Restrictions: | For Research Use only |

Handling

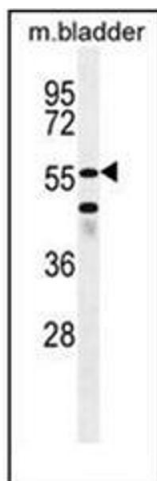
| | |
|--------------------|--|
| Format: | Liquid |
| Concentration: | 0.25 mg/mL |
| Buffer: | PBS, 0.09 % Sodium Azide |
| Preservative: | Sodium azide |
| Precaution of Use: | This product contains sodium azide: a POISONOUS AND HAZARDOUS SUBSTANCE which should be handled by trained staff only. |
| Handling Advice: | Avoid repeated freezing and thawing. |
| Storage: | 4 °C/-20 °C |
| Storage Comment: | Store undiluted at 2-8 °C for one month or (in aliquots) at -20 °C for longer. |

Validation report #100923 for Western Blotting (WB)



Immunohistochemistry (Paraffin-embedded Sections)

Image 1. Formalin fixed, paraffin embedded human prostate carcinoma stained with SHQ1 Antibody (N-term) followed by peroxidase conjugation of the secondary antibody and DAB staining.



Western Blotting

Image 2. Western blot analysis of SHQ1 Antibody (N-term) in Mouse bladder tissue lysates (35ug/lane). This demonstrates the SHQ1 antibody detected the SHQ1 protein (arrow).