

Datasheet for ABIN954803
anti-NEU2 antibody (N-Term)[Go to Product page](#)

4 Images

Overview

Quantity:	0.4 mL
Target:	NEU2
Binding Specificity:	AA 30-58, N-Term
Reactivity:	Human
Host:	Rabbit
Clonality:	Polyclonal
Conjugate:	This NEU2 antibody is un-conjugated
Application:	Western Blotting (WB), Immunofluorescence (IF), Flow Cytometry (FACS), Immunohistochemistry (Paraffin-embedded Sections) (IHC (p)), Enzyme Immunoassay (EIA)

Product Details

Immunogen:	KLH conjugated synthetic peptide between 30-58 amino acids from the N-terminal region of Human Sialidase-2 Genename: NEU2
Isotype:	Ig Fraction
Specificity:	This antibody recognizes Human Sialidase-2 (N-term).
Purification:	Protein A column, followed by peptide affinity purification

Target Details

Target:	NEU2
Alternative Name:	Sialidase-2 (NEU2 Products)

Target Details

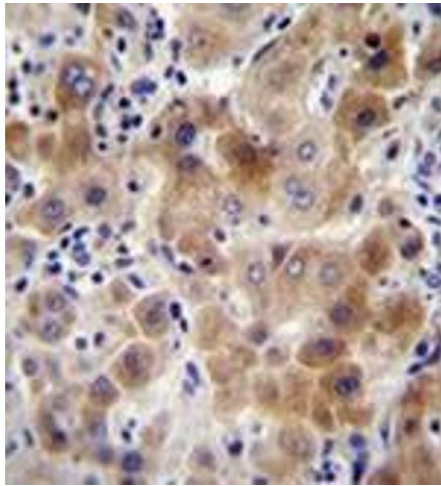
Background:	This gene belongs to a family of glycohydrolytic enzymes which remove sialic acid residues from glycoproteins and glycolipids. Expression studies in COS7 cells confirmed that this gene encodes a functional sialidase. Its cytosolic localization was demonstrated by cell fractionation experiments. [provided by RefSeq].Synonyms: Cytosolic sialidase, N-acetyl-alpha-neuraminidase 2, NEU2
Molecular Weight:	42254 Da
Gene ID:	4759
NCBI Accession:	NP_005374
Pathways:	Regulation of Muscle Cell Differentiation, Skeletal Muscle Fiber Development

Application Details

Application Notes:	Optimal working dilution should be determined by the investigator.
Restrictions:	For Research Use only

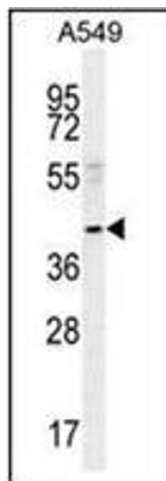
Handling

Format:	Liquid
Concentration:	0.25 mg/mL
Buffer:	PBS containing 0.09 % (W/V) Sodium Azide as preservative
Preservative:	Sodium azide
Precaution of Use:	This product contains sodium azide: a POISONOUS AND HAZARDOUS SUBSTANCE which should be handled by trained staff only.
Handling Advice:	Avoid repeated freezing and thawing.
Storage:	4 °C/-20 °C
Storage Comment:	Store undiluted at 2-8 °C for one month or (in aliquots) at -20 °C for longer.



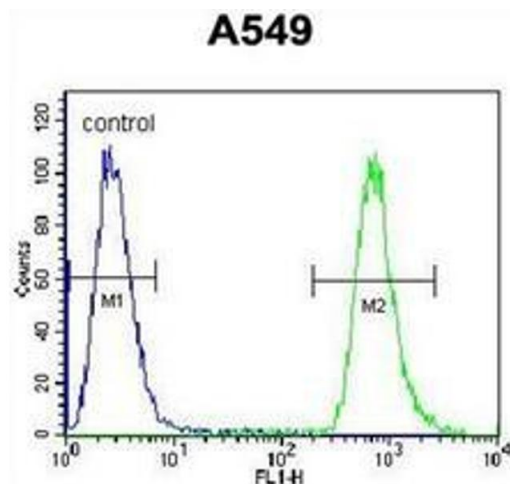
Immunohistochemistry (Paraffin-embedded Sections)

Image 1. Immunohistochemistry analysis in formalin fixed and paraffin embedded human liver tissue reacted with NEU2 Antibody (N-term) followed which was peroxidase conjugated to the secondary antibody and followed by DAB staining. This data demonstrates the use of NEU2 Antibody (N-term) for immunohistochemistry. Clinical relevance has not been evaluated.



Western Blotting

Image 2. Western blot analysis of NEU2 Antibody (N-term) Cat.-No AP52855PU-N in A549 cell line lysates (35ug/lane). This demonstrates the NEU2 antibody detected the NEU2 protein (arrow).



Flow Cytometry

Image 3. Flow cytometric analysis of A549 cells using NEU2 Antibody (N-term) Cat.-No AP52855PU-N (right histogram) compared to a negative control cell (left histogram). FITC-conjugated goat-anti-rabbit secondary antibodies were used for the analysis.

Please check the [product details page](#) for more images. Overall 4 images are available for ABIN954803.