

Datasheet for ABIN954812  
**anti-Six5 antibody (Middle Region)**

## 2 Images

[Go to Product page](#)

## Overview

Quantity:	0.4 mL
Target:	Six5 (SIX5)
Binding Specificity:	AA 264-294, Middle Region
Reactivity:	Human
Host:	Rabbit
Clonality:	Polyclonal
Conjugate:	This Six5 antibody is un-conjugated
Application:	Western Blotting (WB), Immunohistochemistry (Paraffin-embedded Sections) (IHC (p)), Enzyme Immunoassay (EIA)

## Product Details

Immunogen:	KLH conjugated synthetic peptide between 264-294 amino acids from the Central region of Human SIX5. Genename: SIX5
Isotype:	Ig Fraction
Specificity:	This antibody recognizes Human SIX5 (Center).
Purification:	Protein A column, followed by peptide affinity purification

## Target Details

Target:	Six5 (SIX5)
Alternative Name:	SIX5 ( <a href="#">SIX5 Products</a> )

## Target Details

Background:	The protein encoded by this gene is a homeodomain-containing transcription factor that appears to function in the regulation of organogenesis. This gene is located downstream of the dystrophia myotonica-protein kinase gene. Mutations in this gene are a cause of branchiootorenal syndrome type 2.Synonyms: DM locus-associated homeodomain protein, DMAHP, Homeobox protein SIX5, Sine oculis homeobox homolog 5
-------------	--

Molecular Weight:	74562 Da
-------------------	----------

Gene ID:	147912
----------	--------

NCBI Accession:	<a href="#">NP_787071</a>
-----------------	---------------------------

## Application Details

Application Notes:	Optimal working dilution should be determined by the investigator.
--------------------	--

Restrictions:	For Research Use only
---------------	-----------------------

## Handling

Format:	Liquid
---------	--------

Concentration:	0.25 mg/mL
----------------	------------

Buffer:	PBS containing 0.09 % (W/V) Sodium Azide as preservative
---------	--

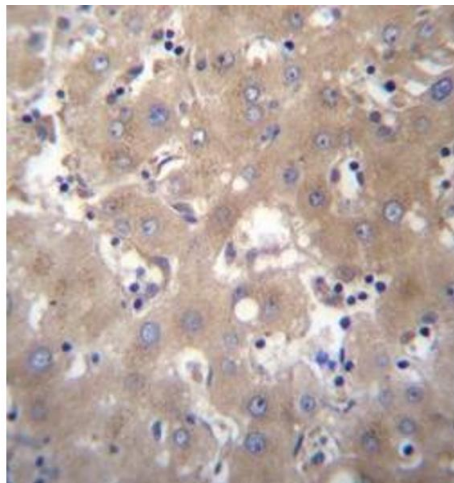
Preservative:	Sodium azide
---------------	--------------

Precaution of Use:	This product contains sodium azide: a POISONOUS AND HAZARDOUS SUBSTANCE which should be handled by trained staff only.
--------------------	--

Handling Advice:	Avoid repeated freezing and thawing.
------------------	--------------------------------------

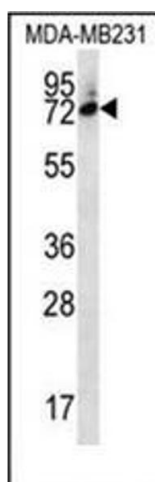
Storage:	4 °C/-20 °C
----------	-------------

Storage Comment:	Store undiluted at 2-8 °C for one month or (in aliquots) at -20 °C for longer.
------------------	--



#### Immunohistochemistry (Paraffin-embedded Sections)

**Image 1.** Formalin fixed, paraffin embedded human liver tissue stained with SIX5 Antibody followed by peroxidase conjugation of the secondary antibody and DAB staining. This data demonstrates the use of SIX5 Antibody (Center) for immunohistochemistry. Clinical relevance has not been evaluated.



#### Western Blotting

**Image 2.** Western blot analysis of SIX5 Antibody in MDA-MB231 cell line lysates (35ug/lane). This demonstrates the SIX5 antibody detected the SIX5 protein (arrow).