

Datasheet for ABIN954819  
**anti-SLAMF9 antibody (C-Term)**[Go to Product page](#)

## 1 Image

## Overview

Quantity:	0.4 mL
Target:	SLAMF9
Binding Specificity:	AA 241-270, C-Term
Reactivity:	Human
Host:	Rabbit
Clonality:	Polyclonal
Application:	Western Blotting (WB), Enzyme Immunoassay (EIA)

## Product Details

Immunogen:	KLH conjugated synthetic peptide between 241-270 amino acids from the C-terminal region of Human SLAMF9. Genename: SLAMF9
Isotype:	Ig Fraction
Specificity:	This antibody recognizes Human SLAMF9 (C-term).
Purification:	Affinity Chromatography on Protein A

## Target Details

Target:	SLAMF9
Alternative Name:	SLAMF9 ( <a href="#">SLAMF9 Products</a> )
Background:	SLAMF9 is a member of the signaling lymphocytic activation molecule family. The encoded protein is a cell surface molecule that consists of two extracellular immunoglobulin domains, a transmembrane domain and a short cytoplasmic tail that lacks the signal transduction motifs

## Target Details

found in other family members.Synonyms: CD2 family member 10, CD2F-10, CD2F10, CD84 homolog 1, CD84-H1, SLAM family member 9

Molecular Weight: 23kd

Gene ID: 89886

NCBI Accession: [NP\\_001139645](#)

## Application Details

Application Notes: Optimal working dilution should be determined by the investigator.

Restrictions: For Research Use only

## Handling

Format: Liquid

Concentration: 0.25 mg/mL

Buffer: PBS, 0.09 % Sodium Azide

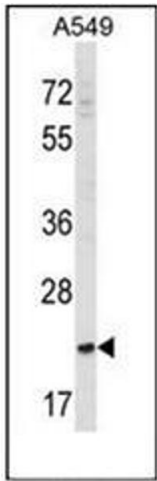
Preservative: Sodium azide

Precaution of Use: This product contains sodium azide: a POISONOUS AND HAZARDOUS SUBSTANCE which should be handled by trained staff only.

Handling Advice: Avoid repeated freezing and thawing.

Storage: 4 °C/-20 °C

Storage Comment: Store undiluted at 2-8 °C for one month or (in aliquots) at -20 °C for longer.



Western Blotting

**Image 1.** Western blot analysis of SLAMF9 Antibody (C-term) in A549 cell line lysates (35ug/lane). This demonstrates the SLAMF9 antibody detected the SLAMF9 protein (arrow).