

Datasheet for ABIN954822
anti-SLC35B2 antibody (C-Term)

2 Images

[Go to Product page](#)

Overview

Quantity:	0.4 mL
Target:	SLC35B2
Binding Specificity:	AA 400-429, C-Term
Reactivity:	Human
Host:	Rabbit
Clonality:	Polyclonal
Conjugate:	This SLC35B2 antibody is un-conjugated
Application:	Western Blotting (WB), Immunohistochemistry (Paraffin-embedded Sections) (IHC (p)), Enzyme Immunoassay (EIA)

Product Details

Immunogen:	KLH conjugated synthetic peptide between 400-429 amino acids from the C-terminal region of Human SLC35B2 (NP_835361.1) Genename: SLC35B2
Isotype:	Ig Fraction
Specificity:	Recognizes SLC35B2 (C-term).
Purification:	Protein A column followed by peptide Affinity purification

Target Details

Target:	SLC35B2
Alternative Name:	SLC35B2 / PAPST1 (SLC35B2 Products)

Target Details

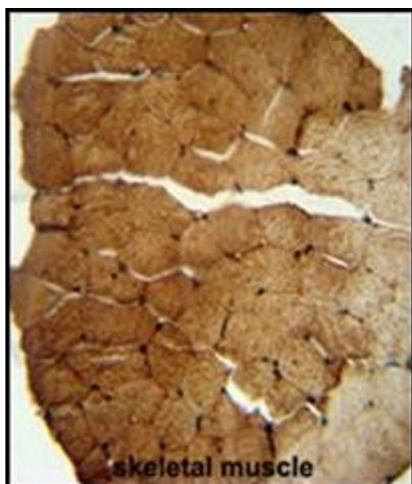
Background:	Synonyms: Adenosine 3'-phospho 5'-phosphosulfate transporter 1, PAPS transporter 1, Putative MAPK-activating protein PM15, Putative NF-kappa-B-activating protein 48, Solute carrier family 35 member B2
Gene ID:	347734
NCBI Accession:	NP_835361
Pathways:	Glycosaminoglycan Metabolic Process , Ribonucleoside Biosynthetic Process

Application Details

Application Notes:	Optimal working dilution should be determined by the investigator.
Restrictions:	For Research Use only

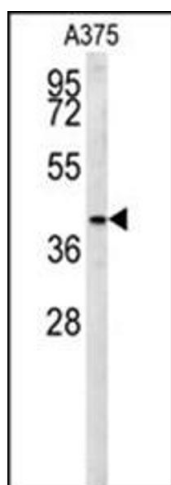
Handling

Format:	Liquid
Concentration:	0.25 mg/mL
Buffer:	PBS with 0.09 % (W/V) Sodium Azide as preservative
Preservative:	Sodium azide
Precaution of Use:	This product contains sodium azide: a POISONOUS AND HAZARDOUS SUBSTANCE which should be handled by trained staff only.
Handling Advice:	Avoid repeated freezing and thawing.
Storage:	4 °C/-20 °C
Storage Comment:	Store the antibody undiluted at 2-8 °C for one month or (in aliquots) at -20 °C for longer.



Immunohistochemistry (Paraffin-embedded Sections)

Image 1. Immunohistochemistry analysis in Formalin Fixed, Paraffin Embedded Human skeletal muscle stained with SLC35B2 Antibody (C-term) followed by peroxidase conjugation of the secondary antibody and DAB staining. This data demonstrates the use of the S35B2 antibody (C-term) for Immunohistochemistry. Clinical relevance has not been evaluated.



Western Blotting

Image 2. Western blot analysis in A375 cell line lysates (35 ug/lane) using SLC35B2 Antibody (C-term) Cat.-No. AP53780PU-N. This demonstrates the S35B2 antibody detected the S35B2 protein (arrow).