



[Go to Product page](#)

Datasheet for ABIN954826

## anti-SLC6A12 antibody (N-Term)

### 2 Images

#### Overview

Quantity:	0.4 mL
Target:	SLC6A12
Binding Specificity:	AA 16-46, N-Term
Reactivity:	Human
Host:	Rabbit
Clonality:	Polyclonal
Conjugate:	This SLC6A12 antibody is un-conjugated
Application:	Western Blotting (WB), Flow Cytometry (FACS), Enzyme Immunoassay (EIA)

#### Product Details

Immunogen:	KLH conjugated synthetic peptide between 16-46 amino acids from the N-terminal region of Human S6A12 Gene name: SLC6A12
Isotype:	Ig Fraction
Specificity:	Recognizes S6A12 (N-term).
Purification:	Protein A column followed by peptide Affinity purification

#### Target Details

Target:	SLC6A12
Alternative Name:	SLC6A12 ( <a href="#">SLC6A12 Products</a> )
Background:	Transports betaine and GABA. May have a role in regulation of GABAergic transmission in the

## Target Details

---

brain through the reuptake of GABA into presynaptic terminals, as well as in osmotic regulation. Synonyms: BGT-1, Na(+)/Cl(-) betaine/GABA transporter, Sodium- and chloride-dependent betaine transporter, Solute carrier family 6 member 12

Gene ID: 6539

NCBI Accession: [NP\\_001116319](#)

## Application Details

---

Application Notes: Optimal working dilution should be determined by the investigator.

Restrictions: For Research Use only

## Handling

---

Format: Liquid

Concentration: 0.25 mg/mL

Buffer: PBS with 0.09 % (W/V) Sodium Azide as preservative

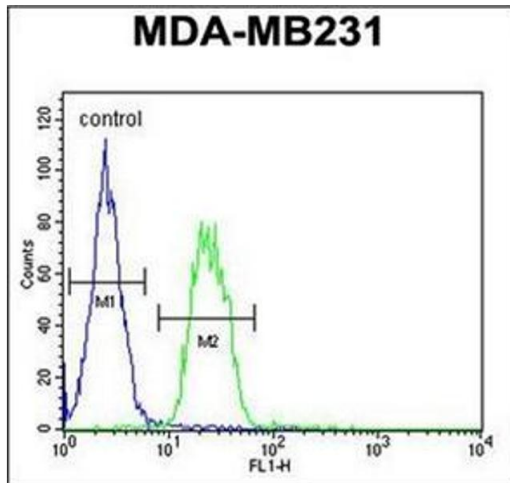
Preservative: Sodium azide

Precaution of Use: This product contains sodium azide: a POISONOUS AND HAZARDOUS SUBSTANCE which should be handled by trained staff only.

Handling Advice: Avoid repeated freezing and thawing.

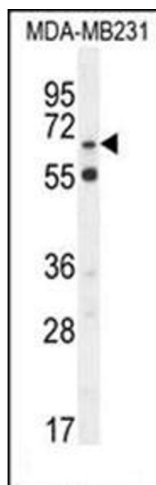
Storage: 4 °C/-20 °C

Storage Comment: Store the antibody undiluted at 2-8 °C for one month or (in aliquots) at -20 °C for longer.



### Flow Cytometry

**Image 1.** Flow Cytometry analysis of MDA-MB231 cells using S6A12 Antibody (N-term) Cat.-No AP53785PU-N (Right histogram) compared to a negative control cell (Left histogram). FITC-conjugated Goat-anti-Rabbit secondary antibodies were used for the analysis.



### Western Blotting

**Image 2.** Western blot analysis in MDA-MB231 cell line lysates (35 µg/lane) using S6A12 Antibody (N-term) Cat.-No AP53785PU-N. This demonstrates the S6A12 antibody detected the S6A12 protein (arrow).