



[Go to Product page](#)

Datasheet for ABIN954833

anti-SLC04C1 antibody (C-Term)

3 Images

Overview

Quantity:	0.4 mL
Target:	SLC04C1 (OATP-H)
Binding Specificity:	AA 523-553, C-Term
Reactivity:	Human
Host:	Rabbit
Clonality:	Polyclonal
Conjugate:	This SLC04C1 antibody is un-conjugated
Application:	Western Blotting (WB), Flow Cytometry (FACS), Immunohistochemistry (Paraffin-embedded Sections) (IHC (p)), Enzyme Immunoassay (EIA)

Product Details

Immunogen:	KLH conjugated synthetic peptide between 523-553 amino acids from the C-terminal region of Human SLC04C1. Genename: SLC04C1
Isotype:	Ig Fraction
Specificity:	This antibody recognizes Human SLC04C1 / OATP4C1 (C-term).
Purification:	Affinity Chromatography on Protein A

Target Details

Target:	SLC04C1 (OATP-H)
Alternative Name:	SLC04C1 / OATP4C1 (OATP-H Products)

Target Details

Background: SLC04C1 belongs to the organic anion transporter (OATP) family. OATPs are involved in the membrane transport of bile acids, conjugated steroids, thyroid hormone, eicosanoids, peptides, and numerous drugs in many tissues (Mikkaichi et al., 2004 [PubMed 14993604]). Synonyms: OATP-H, OATP-M1, OATPX, Organic anion transporter M1, SLC21A20, Solute carrier family 21 member 20, Solute carrier organic anion transporter family member 4C1

Molecular Weight: 78948 Da

Gene ID: 353189

NCBI Accession: [NP_851322](#)

Application Details

Application Notes: Optimal working dilution should be determined by the investigator.

Restrictions: For Research Use only

Handling

Format: Liquid

Concentration: 0.25 mg/mL

Buffer: PBS, 0.09 % Sodium Azide

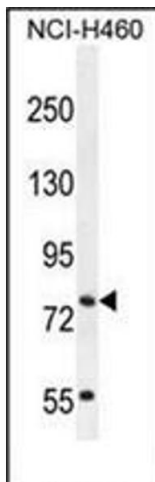
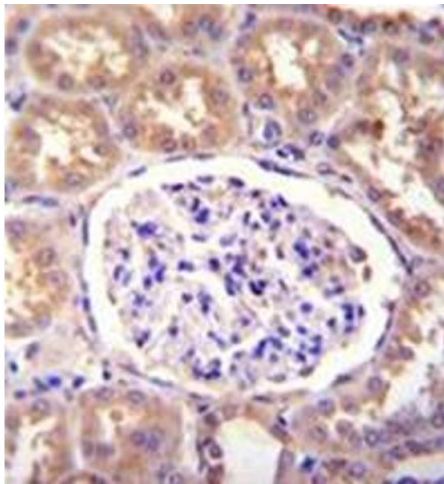
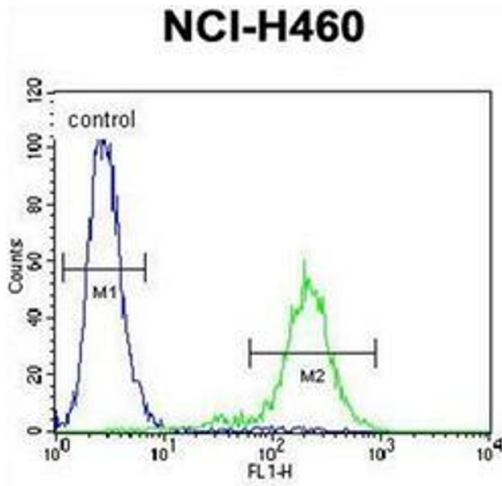
Preservative: Sodium azide

Precaution of Use: This product contains sodium azide: a POISONOUS AND HAZARDOUS SUBSTANCE which should be handled by trained staff only.

Handling Advice: Avoid repeated freezing and thawing.

Storage: 4 °C/-20 °C

Storage Comment: Store undiluted at 2-8 °C for one month or (in aliquots) at -20 °C for longer.



Flow Cytometry

Image 1. Flow cytometric analysis of NCI-H460 cells using SLCO4C1 / OATP4C1 Antibody (C-term) Cat.-No AP53931PU-N (right histogram) compared to a negative control cell (left histogram). FITC-conjugated goat-anti-rabbit secondary antibodies were used for the analysis.

Immunohistochemistry (Paraffin-embedded Sections)

Image 2. Formalin fixed, paraffin embedded human kidney tissue stained with SLCO4C1 / OATP4C1 Antibody (C-term) followed by peroxidase conjugation of the secondary antibody and DAB staining.

Western Blotting

Image 3. Western blot analysis of SLCO4C1 / OATP4C1 Antibody (C-term) in NCI-H460 cell line lysates (35ug/lane). This demonstrates the SLCO4C1 antibody detected the SLCO4C1 protein (arrow).