



[Go to Product page](#)

Datasheet for ABIN954834

anti-SLFN12L antibody (N-Term)

2 Images

Overview

Quantity:	0.4 mL
Target:	SLFN12L
Binding Specificity:	AA 98-127, N-Term
Reactivity:	Human
Host:	Rabbit
Clonality:	Polyclonal
Application:	Western Blotting (WB), Flow Cytometry (FACS), Enzyme Immunoassay (EIA)

Product Details

Immunogen:	KLH conjugated synthetic peptide between 98-127 amino acids from the N-terminal region of Human SLFN12L Gene name: SLFN12L
Isotype:	Ig Fraction
Specificity:	This antibody recognizes SLFN12L (N-term).
Purification:	Affinity Chromatography on Protein A

Target Details

Target:	SLFN12L
Alternative Name:	SLFN12L (SLFN12L Products)
Background:	Synonyms: SLFN5, Schlafen family member 12-like
Molecular Weight:	70568 Da

Target Details

Gene ID: 100506736

NCBI Accession: [NP_001182719](#)

Application Details

Application Notes: Optimal working dilution should be determined by the investigator.

Restrictions: For Research Use only

Handling

Format: Liquid

Concentration: 0.25 mg/mL

Buffer: PBS, 0.09 % Sodium Azide

Preservative: Sodium azide

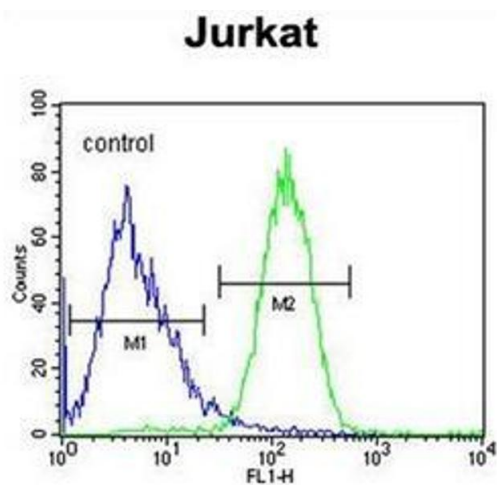
Precaution of Use: This product contains sodium azide: a POISONOUS AND HAZARDOUS SUBSTANCE which should be handled by trained staff only.

Handling Advice: Avoid repeated freezing and thawing.

Storage: 4 °C/-20 °C

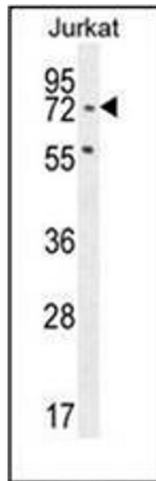
Storage Comment: Store undiluted at 2-8 °C for one month or (in aliquots) at -20 °C for longer.

Images



Flow Cytometry

Image 1. Flow cytometric analysis of Jurkat cells using SLFN12L Antibody (N-term) Cat.-No AP53932PU-N (right histogram) compared to a negative control cell (left histogram). FITC-conjugated goat-anti-rabbit secondary antibodies were used for the analysis.



Western Blotting

Image 2. Western blot analysis of SLFN12L Antibody (N-term) in Jurkat cell line lysates (35ug/lane). This demonstrates the SLFN12L antibody detected the SLFN12L protein (arrow).