

Datasheet for ABIN954842

**anti-SMAD9 antibody (Middle Region)**[Go to Product page](#)**1** Image

## Overview

Quantity:	0.4 mL
Target:	SMAD9
Binding Specificity:	AA 199-228, Middle Region
Reactivity:	Human
Host:	Rabbit
Clonality:	Polyclonal
Conjugate:	This SMAD9 antibody is un-conjugated
Application:	Western Blotting (WB), Enzyme Immunoassay (EIA)

## Product Details

Immunogen:	KLH conjugated synthetic peptide between 199-228 amino acids from the Central region of Human SMAD9
Isotype:	Ig Fraction
Specificity:	This antibody recognizes Human SMAD9
Purification:	Affinity Chromatography on Protein A

## Target Details

Target:	SMAD9
Alternative Name:	SMAD9 ( <a href="#">SMAD9 Products</a> )
Background:	The protein encoded by this gene is a member of the SMAD family, which transduces signals

## Target Details

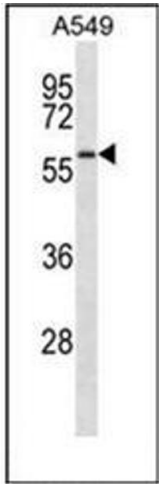
	from TGF-beta family members. The encoded protein is activated by bone morphogenetic proteins and interacts with SMAD4. Two transcript variants encoding different isoforms have been found for this gene.Synonyms: MAD homolog 9, MADH9, Mothers against DPP homolog 9, Mothers against decapentaplegic homolog 9, SMAD 9, SMAD family member 9, SMAD-9
Molecular Weight:	52493 Da
Gene ID:	4093
NCBI Accession:	<a href="#">NP_001120689</a>

## Application Details

Application Notes:	Optimal working dilution should be determined by the investigator.
Restrictions:	For Research Use only

## Handling

Format:	Liquid
Concentration:	0.25 mg/mL
Buffer:	PBS, 0.09 % Sodium Azide
Preservative:	Sodium azide
Precaution of Use:	This product contains sodium azide: a POISONOUS AND HAZARDOUS SUBSTANCE which should be handled by trained staff only.
Handling Advice:	Avoid repeated freezing and thawing.
Storage:	4 °C/-20 °C
Storage Comment:	Store undiluted at 2-8 °C for one month or (in aliquots) at -20 °C for longer.



Western Blotting

**Image 1.** Western blot analysis of SMAD9 Antibody in A549 cell line lysates (35ug/lane). This demonstrates the SMAD9 antibody detected the SMAD9 protein (arrow).