



[Go to Product page](#)

Datasheet for ABIN954843

## anti-SMAP2 antibody (Middle Region)

### 2 Images

#### Overview

Quantity:	0.4 mL
Target:	SMAP2
Binding Specificity:	AA 110-140, Middle Region
Reactivity:	Human
Host:	Rabbit
Clonality:	Polyclonal
Conjugate:	This SMAP2 antibody is un-conjugated
Application:	Western Blotting (WB), Immunohistochemistry (Paraffin-embedded Sections) (IHC (p)), Enzyme Immunoassay (EIA)

#### Product Details

Immunogen:	KLH conjugated synthetic peptide between 110-140 amino acids from the Central region of Human SMAP2. Genename: SMAP2
Isotype:	Ig Fraction
Specificity:	This antibody recognizes Human SMAP2 (Center).
Purification:	Affinity Chromatography on Protein A

#### Target Details

Target:	SMAP2
Alternative Name:	SMAP2 ( <a href="#">SMAP2 Products</a> )

## Target Details

---

**Background:** SMAP2 is a GTPase activating protein that acts on ARF1. Can also activate ARF6 (in vitro). May play a role in clathrin-dependent retrograde transport from early endosomes to the trans-Golgi network (By similarity).Synonyms: SMAP1L, Stromal membrane-associated protein 1-like, Stromal membrane-associated protein 2

---

**Molecular Weight:** 46786 Da

---

**Gene ID:** 64744

---

**NCBI Accession:** [NP\\_001185907](#)

---

## Application Details

---

**Application Notes:** Optimal working dilution should be determined by the investigator.

---

**Restrictions:** For Research Use only

---

## Handling

---

**Format:** Liquid

---

**Concentration:** 0.25 mg/mL

---

**Buffer:** PBS, 0.09 % Sodium Azide

---

**Preservative:** Sodium azide

---

**Precaution of Use:** This product contains sodium azide: a POISONOUS AND HAZARDOUS SUBSTANCE which should be handled by trained staff only.

---

**Handling Advice:** Avoid repeated freezing and thawing.

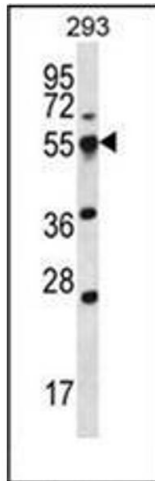
---

**Storage:** 4 °C/-20 °C

---

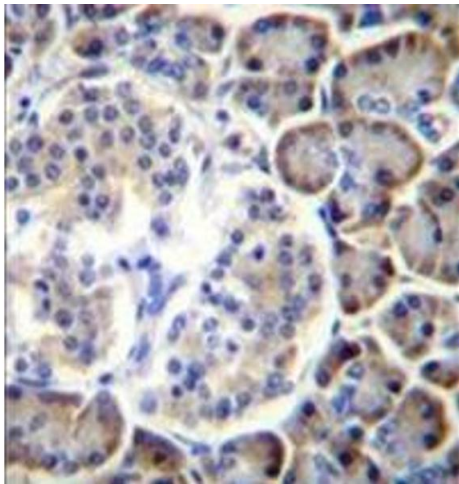
**Storage Comment:** Store undiluted at 2-8 °C for one month or (in aliquots) at -20 °C for longer.

---



### Western Blotting

**Image 1.** Western blot analysis of SMAP2 Antibody in 293 cell line lysates (35ug/lane). This demonstrates the SMAP2 antibody detected the SMAP2 protein (arrow).



### Immunohistochemistry (Paraffin-embedded Sections)

**Image 2.** Formalin fixed, paraffin embedded human pancreas tissue stained with SMAP2 Antibody followed by peroxidase conjugation of the secondary antibody and DAB staining. This data demonstrates the use of SMAP2 Antibody (Center) for immunohistochemistry. Clinical relevance has not been evaluated.