



Datasheet for ABIN954854  
**anti-SMNDC1 antibody (N-Term)**



[Go to Product page](#)

2 Images

Overview

Quantity:	0.4 mL
Target:	SMNDC1
Binding Specificity:	AA 19-48, N-Term
Reactivity:	Human, Mouse
Host:	Rabbit
Clonality:	Polyclonal
Conjugate:	This SMNDC1 antibody is un-conjugated
Application:	Western Blotting (WB), Flow Cytometry (FACS), Enzyme Immunoassay (EIA)

Product Details

Immunogen:	KLH conjugated synthetic peptide between 19~48 amino acids from the N-terminal region of human SMNDC1
Isotype:	Ig Fraction
Specificity:	This antibody reacts to SMNDC1.
Cross-Reactivity (Details):	Species reactivity (tested):Human and Mouse.
Purification:	Affinity chromatography on Protein A

Target Details

Target:	SMNDC1
Alternative Name:	SMNDC1 ( <a href="#">SMNDC1 Products</a> )

## Target Details

---

**Background:** This protein is a paralog of SMN1 gene, which encodes the survival motor neuron protein, mutations in which are cause of autosomal recessive proximal spinal muscular atrophy. The protein encoded by this gene is a nuclear protein that has been identified as a constituent of the spliceosome complex. This protein is differentially expressed, with abundant levels in skeletal muscle, and may share similar cellular function as the SMN1 gene. Synonyms: 30 kDa splicing factor SMNrp, SMN-related protein, SMNR, SPF30, Survival motor neuron domain-containing protein 1, Survival of motor neuron-related-splicing factor 30

**Molecular Weight:** 26711 Da

**Gene ID:** 10285

**NCBI Accession:** [NP\\_005862](#)

## Application Details

---

**Application Notes:** Optimal working dilution should be determined by the investigator.

**Restrictions:** For Research Use only

## Handling

---

**Format:** Liquid

**Concentration:** 0.25 mg/mL

**Buffer:** PBS, 0.09 % (W/V) sodium azide

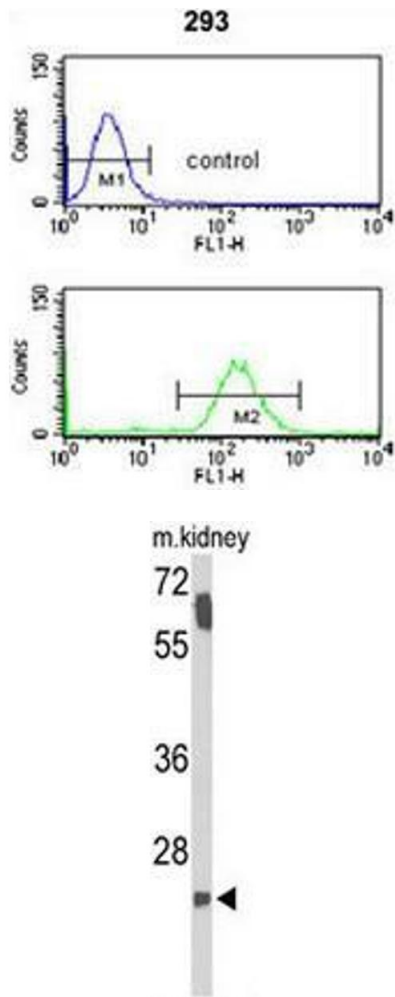
**Preservative:** Sodium azide

**Precaution of Use:** This product contains sodium azide: a POISONOUS AND HAZARDOUS SUBSTANCE which should be handled by trained staff only.

**Handling Advice:** Avoid repeated freezing and thawing.

**Storage:** 4 °C/-20 °C

**Storage Comment:** Store the antibody undiluted at 2-8 °C for one month or (in aliquots) at -20 °C for longer.



### Flow Cytometry

**Image 1.** SMNDC1 Antibody (N-term) flow cytometry analysis of 293 cells (bottom histogram) compared to a negative control cell (top histogram). FITC-conjugated goat-anti-rabbit secondary antibodies were used for the analysis.

### Western Blotting

**Image 2.** Western blot analysis of SMNDC1 Antibody (N-term) in mouse kidney tissue lysates (35µg/lane). SMNDC1 (arrow) was detected using the purified Pab.