

Datasheet for ABIN954865  
**anti-SMYD1 antibody (C-Term)**[Go to Product page](#)

## 2 Images

## Overview

Quantity:	0.4 mL
Target:	SMYD1
Binding Specificity:	AA 420-449, C-Term
Reactivity:	Human
Host:	Rabbit
Clonality:	Polyclonal
Conjugate:	This SMYD1 antibody is un-conjugated
Application:	Western Blotting (WB), Enzyme Immunoassay (EIA)

## Product Details

Immunogen:	KLH conjugated synthetic peptide between 420-449 amino acids from the C-terminal region of human SMYD1
Isotype:	Ig Fraction
Specificity:	This antibody reacts to SMYD1.
Cross-Reactivity (Details):	Species reactivity (tested):Human.
Purification:	Affinity chromatography on Protein A

## Target Details

Target:	SMYD1
Alternative Name:	SMYD1 ( <a href="#">SMYD1 Products</a> )

### Target Details

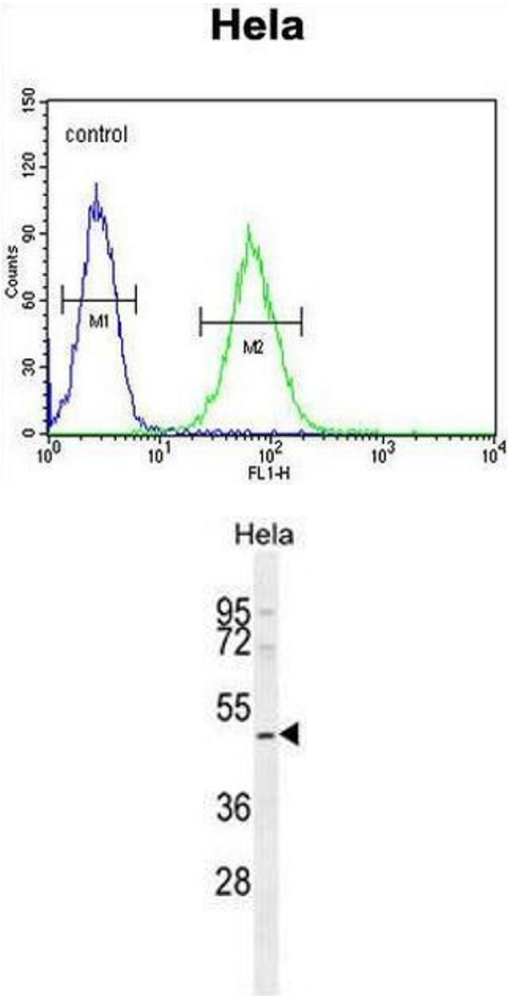
Background:	Acts as a transcriptional repressor. Essential for cardiomyocyte differentiation and cardiac morphogenesis (By similarity).Synonyms: SET and MYND domain-containing protein 1
Molecular Weight:	56617 Da
Gene ID:	150572
NCBI Accession:	<a href="#">NP_938015</a>
Pathways:	<a href="#">Regulation of Muscle Cell Differentiation, Skeletal Muscle Fiber Development</a>

### Application Details

Application Notes:	Optimal working dilution should be determined by the investigator.
Restrictions:	For Research Use only

### Handling

Format:	Liquid
Concentration:	0.25 mg/mL
Buffer:	PBS, 0.09 % (W/V) sodium azide
Preservative:	Sodium azide
Precaution of Use:	This product contains sodium azide: a POISONOUS AND HAZARDOUS SUBSTANCE which should be handled by trained staff only.
Handling Advice:	Avoid repeated freezing and thawing.
Storage:	4 °C/-20 °C
Storage Comment:	Store the antibody undiluted at 2-8 °C for one month or (in aliquots) at -20 °C for longer.



Flow Cytometry

**Image 1.** SMYD1 Antibody (C-term) flow cytometric analysis of Hela cells (right histogram) compared to a negative control cell (left histogram).FITC-conjugated goat-anti-rabbit secondary antibodies were used for the analysis.

Western Blotting

**Image 2.** SMYD1 Antibody (C-term) western blot analysis in Hela cell line lysates (35µg/lane).This demonstrates the SMYD1 antibody detected the SMYD1 protein (arrow).