

Datasheet for ABIN954872
anti-SNRPD3 antibody (C-Term)

3 Images

[Go to Product page](#)

Overview

Quantity:	0.4 mL
Target:	SNRPD3
Binding Specificity:	AA 97-126, C-Term
Reactivity:	Human
Host:	Rabbit
Clonality:	Polyclonal
Conjugate:	This SNRPD3 antibody is un-conjugated
Application:	Western Blotting (WB), Flow Cytometry (FACS), Immunohistochemistry (Paraffin-embedded Sections) (IHC (p)), Enzyme Immunoassay (EIA)

Product Details

Immunogen:	KLH conjugated synthetic peptide between 97~126 amino acids from the C-terminal region of Human snRNP-D3 / Sm-D3 Genename: SNRPD3
Isotype:	Ig Fraction
Specificity:	This antibody recognizes Human snRNP-D3 / Sm-D3 (C-term).
Cross-Reactivity (Details):	Species reactivity (tested):Human.
Purification:	Protein A column, followed by peptide affinity purification

Target Details

Target:	SNRPD3
---------	--------

Target Details

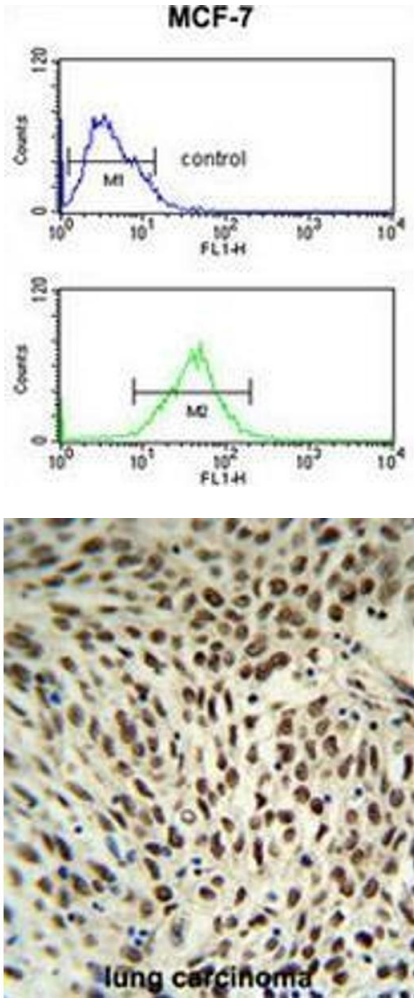
Abstract:	SNRPD3 Products
Background:	The protein belongs to the small nuclear ribonucleoprotein core protein family. It is required for pre-mRNA splicing and small nuclear ribonucleoprotein biogenesis. Synonyms: SNRPD3, Small nuclear ribonucleoprotein Sm D3, snRNP core protein D3
Molecular Weight:	13916 Da
Gene ID:	6634
NCBI Accession:	NP_004166
Pathways:	Ribonucleoprotein Complex Subunit Organization

Application Details

Application Notes:	Optimal working dilution should be determined by the investigator.
Restrictions:	For Research Use only

Handling

Format:	Liquid
Concentration:	0.25 mg/mL
Buffer:	PBS containing 0.09 % (W/V) Sodium Azide as preservative
Preservative:	Sodium azide
Precaution of Use:	This product contains sodium azide: a POISONOUS AND HAZARDOUS SUBSTANCE which should be handled by trained staff only.
Handling Advice:	Avoid repeated freezing and thawing.
Storage:	4 °C/-20 °C
Storage Comment:	Store the antibody undiluted at 2-8 °C for one month or (in aliquots) at -20 °C for longer.



Flow Cytometry

Image 1. SNRPD3 Antibody (C-term) flow cytometric analysis of MCF-7 cells (bottom histogram) compared to a negative control cell (top histogram). FITC-conjugated goat-anti-rabbit secondary antibodies were used for the analysis.

Immunohistochemistry (Paraffin-embedded Sections)

Image 2. SNRPD3 Antibody (C-term) IHC analysis in formalin fixed and paraffin embedded human lung carcinoma followed by peroxidase conjugation of the secondary antibody and DAB staining. This data demonstrates the use of the SNRPD3 Antibody (C-term) for immunohistochemistry. Clinical relevance has not been evaluated.

Western Blotting

Image 3. Western blot analysis of SNRPD3 Antibody (C-term) in MCF-7, Jurkat cell line lysates (35µg/lane). SNRPD3 (arrow) was detected using the purified Pab.

