

Datasheet for ABIN954878  
**anti-SOBP antibody (C-Term)**[Go to Product page](#)

## 1 Image

## Overview

Quantity:	0.4 mL
Target:	SOBP
Binding Specificity:	AA 839-869, C-Term
Reactivity:	Human
Host:	Rabbit
Clonality:	Polyclonal
Application:	Western Blotting (WB), Enzyme Immunoassay (EIA)

## Product Details

Immunogen:	KLH conjugated synthetic peptide between 839-869 amino acids from the C-terminal region of Human SOBP. Genename: SOBP
Isotype:	Ig Fraction
Specificity:	This antibody recognizes Human SOBP (C-term).
Purification:	Affinity Chromatography on Protein A

## Target Details

Target:	SOBP
Alternative Name:	SOBP ( <a href="#">SOBP Products</a> )
Background:	Implicated in development of the cochlea (By similarity).Synonyms: JXC1, Sine oculis-binding protein homolog

## Target Details

Molecular Weight:	92658 Da
Gene ID:	55084
NCBI Accession:	<a href="#">NP_060483</a>
Pathways:	<a href="#">Sensory Perception of Sound</a>

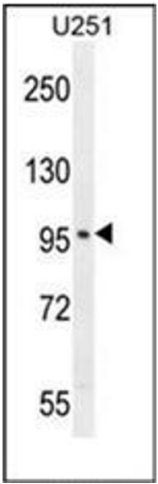
## Application Details

Application Notes:	Optimal working dilution should be determined by the investigator.
Restrictions:	For Research Use only

## Handling

Format:	Liquid
Concentration:	0.25 mg/mL
Buffer:	PBS, 0.09 % Sodium Azide
Preservative:	Sodium azide
Precaution of Use:	This product contains sodium azide: a POISONOUS AND HAZARDOUS SUBSTANCE which should be handled by trained staff only.
Handling Advice:	Avoid repeated freezing and thawing.
Storage:	4 °C/-20 °C
Storage Comment:	Store undiluted at 2-8 °C for one month or (in aliquots) at -20 °C for longer.

## Images



### Western Blotting

**Image 1.** Western blot analysis of SOBP Antibody (C-term) in U251 cell line lysates (35ug/lane). This demonstrates the SOBP antibody detected the SOBP protein (arrow).