

Datasheet for ABIN954879  
**anti-SOCS4 antibody (AA 234-262)**

## 3 Images

[Go to Product page](#)

## Overview

Quantity:	0.4 mL
Target:	SOCS4
Binding Specificity:	AA 234-262
Reactivity:	Human
Host:	Rabbit
Clonality:	Polyclonal
Conjugate:	This SOCS4 antibody is un-conjugated
Application:	Western Blotting (WB), Immunofluorescence (IF), Immunohistochemistry (Paraffin-embedded Sections) (IHC (p)), Enzyme Immunoassay (EIA), Flow Cytometry (FACS)

## Product Details

Immunogen:	KLH conjugated synthetic peptide between 234-262 amino acids from the Central region of Human SOCS4. Genename: SOCS4
Isotype:	Ig Fraction
Specificity:	This antibody detects SOCS4 at Center
Cross-Reactivity (Details):	Species reactivity (tested):Human.
Purification:	Peptide Affinity Chromatography on Protein A

## Target Details

Target:	SOCS4
---------	-------

## Target Details

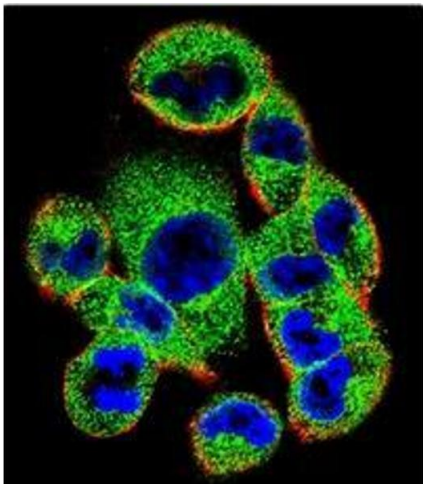
Alternative Name:	SOCS4 ( <a href="#">SOCS4 Products</a> )
Background:	The protein encoded by this gene contains a SH2 domain and a SOCS BOX domain. The protein thus belongs to the suppressor of cytokine signaling (SOCS), also known as STAT-induced STAT inhibitor (SSI), protein family. SOCS family members are known to be cytokine-inducible negative regulators of cytokine signaling. Two alternatively spliced transcript variants encoding the same protein have been found for this gene.Synonyms: SOCS-4, SOCS-7, SOCS7, Suppressor of cytokine signaling 4, Suppressor of cytokine signaling 7
Gene ID:	122809
NCBI Accession:	<a href="#">NP_543143</a>
Pathways:	<a href="#">JAK-STAT Signaling</a> , <a href="#">EGFR Signaling Pathway</a>

## Application Details

Application Notes:	Optimal working dilution should be determined by the investigator.
Restrictions:	For Research Use only

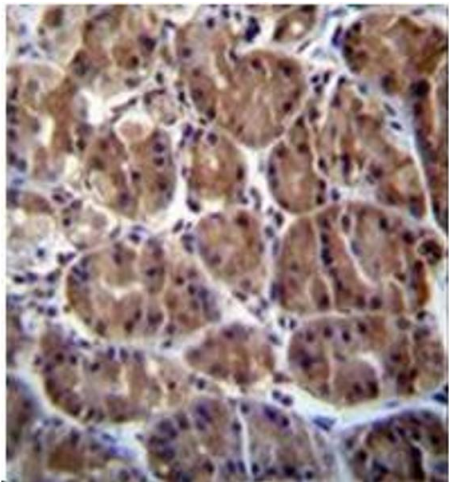
## Handling

Format:	Liquid
Concentration:	0.25 mg/mL
Buffer:	PBS, 0.09 % (W/V) Sodium Azide
Preservative:	Sodium azide
Precaution of Use:	This product contains sodium azide: a POISONOUS AND HAZARDOUS SUBSTANCE which should be handled by trained staff only.
Handling Advice:	Avoid repeated freezing and thawing.
Storage:	4 °C/-20 °C
Storage Comment:	Store the antibody undiluted at 2-8 °C for one month or (in aliquots) at -20 °C for longer.



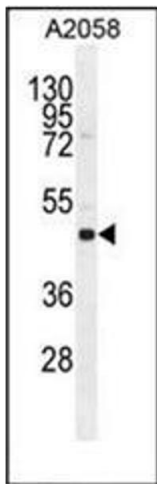
### Immunofluorescence

**Image 1.** Confocal Immunofluorescent analysis of SOCS4 antibody (Center) Cat.-No AP53981PU-N with A2058 cell followed by Alexa Fluor 488-conjugated Goat anti-Rabbit IgG (green). Actin filaments have been labeled with Alexa Fluor 555 phalloidin (red). DAPI was used to stain the cell nuclear (blue).



### Immunohistochemistry (Paraffin-embedded Sections)

**Image 2.** Immunohistochemistry analysis in formalin fixed and paraffin embedded human stomach tissue stained with SOCS4 Antibody (Center) followed by peroxidase conjugation of the secondary antibody and DAB staining. This data demonstrates the use of SOCS4 Antibody (Center) for immunohistochemistry. Clinical relevance has not been evaluated.



### Western Blotting

**Image 3.** Western blot analysis in A2058 cell line lysates using SOCS4 Antibody (35ug/lane). This demonstrates the SOCS4 antibody detected the SOCS4 protein (arrow).