

Datasheet for ABIN954880

**anti-SOHLH1 antibody (N-Term)**

3 Images

[Go to Product page](#)

## Overview

Quantity:	0.4 mL
Target:	SOHLH1
Binding Specificity:	AA 43-72, N-Term
Reactivity:	Human
Host:	Rabbit
Clonality:	Polyclonal
Conjugate:	This SOHLH1 antibody is un-conjugated
Application:	Western Blotting (WB), Flow Cytometry (FACS), Immunohistochemistry (Paraffin-embedded Sections) (IHC (p)), Enzyme Immunoassay (EIA)

## Product Details

Immunogen:	Synthetic peptide - KLH conjugated - corresponding to the N-terminal region (between 43-72aa) of human SOHLH1 / TEB2
Isotype:	Ig Fraction
Specificity:	This antibody recognizes SOHLH1 / TEB2 at N-term.
Cross-Reactivity (Details):	Species reactivity (tested):Human
Purification:	Purified through a Protein A column followed by peptide affinity purification

## Target Details

Target:	SOHLH1
---------	--------

## Target Details

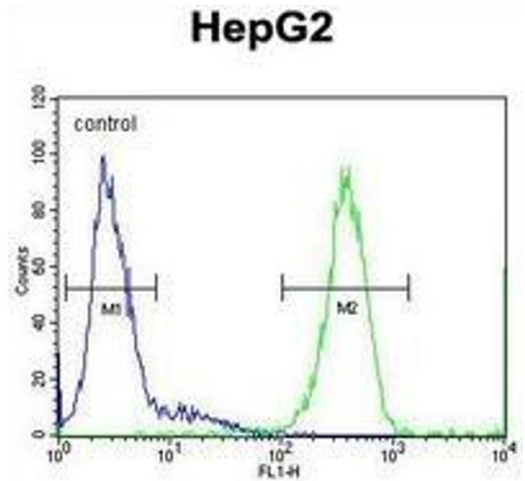
Alternative Name:	SOHLH1 / TEB2 ( <a href="#">SOHLH1 Products</a> )
Background:	Probable transcription factor required during spermatogenesis and oogenesis (By similarity).Synonyms: C9orf157, NOHLH, Spermatogenesis- and oogenesis-specific basic helix-loop-helix-containing protein 1
Gene ID:	402381
NCBI Accession:	<a href="#">NP_001012415</a>

## Application Details

Application Notes:	Optimal working dilution should be determined by the investigator.
Restrictions:	For Research Use only

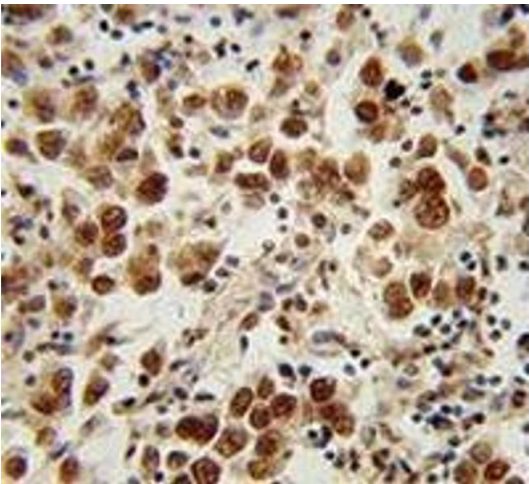
## Handling

Format:	Liquid
Concentration:	0.25 mg/mL
Buffer:	PBS with 0.09 % (W/V) Sodium azide
Preservative:	Sodium azide
Precaution of Use:	This product contains sodium azide: a POISONOUS AND HAZARDOUS SUBSTANCE which should be handled by trained staff only.
Handling Advice:	Avoid repeated freezing and thawing.
Storage:	4 °C/-20 °C
Storage Comment:	Store undiluted at 2-8 °C for one month or (in aliquots) at -20 °C for longer.



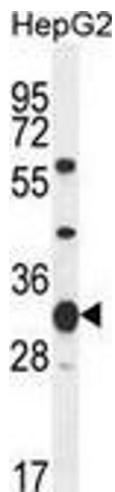
### Flow Cytometry

**Image 1.** Flow cytometric analysis of HepG2 cells (right histogram) compared to a negative control cell (left histogram) using SOHLH1 / TEB2 Antibody (N-term), followed by FITC-conjugated goat-anti-rabbit secondary antibodies.



### Immunohistochemistry (Paraffin-embedded Sections)

**Image 2.** Immunohistochemistry analysis in human testis carcinoma (Formalin-fixed, Paraffin-embedded) using SOHLH1 / TEB2 Antibody (N-term), followed by peroxidase conjugation of the secondary antibody and DAB staining. This data demonstrates the use of the SOHLH1 antibody for IHC; Clinical relevance has not been evaluated.



### Western Blotting

**Image 3.** Western blot analysis in HepG2 cell line lysates (35ug/lane) using SOHLH1 / TEB2 Antibody (N-term). This demonstrates the SOHLH1 antibody detected the SOHLH1 protein (arrow).