

Datasheet for ABIN954882

anti-SORBS1 antibody (Middle Region)**3** Images[Go to Product page](#)

Overview

Quantity:	0.4 mL
Target:	SORBS1
Binding Specificity:	AA 869-896, Middle Region
Reactivity:	Human, Hamster
Host:	Rabbit
Clonality:	Polyclonal
Conjugate:	This SORBS1 antibody is un-conjugated
Application:	Western Blotting (WB), Enzyme Immunoassay (EIA)

Product Details

Immunogen:	KLH conjugated synthetic peptide between 869-896 amino acids from the Central region of Human SORBS1. Genename: SORBS1.
Isotype:	Ig Fraction
Specificity:	This antibody recognizes Human SORBS1 / Ponsin (Center).
Purification:	Affinity Chromatography on Protein A

Target Details

Target:	SORBS1
Alternative Name:	SORBS1 / Ponsin (SORBS1 Products)
Background:	Plays a role in tyrosine phosphorylation of CBL by linking CBL to the insulin receptor. Required

Target Details

for insulin-stimulated glucose transport. Involved in formation of actin stress fibers and focal adhesions (By similarity).Synonyms: CAP, KIAA0894, KIAA1296, SH3D5, SH3P12, Sorbin and SH3 domain-containing protein 1, c-Cbl-associated protein

Molecular Weight: 142497 Da

Gene ID: 10580

NCBI Accession: [NP_001030126](#)

Pathways: [Cell-Cell Junction Organization](#), [Regulation of Carbohydrate Metabolic Process](#)

Application Details

Application Notes: Optimal working dilution should be determined by the investigator.

Restrictions: For Research Use only

Handling

Format: Liquid

Concentration: 0.25 mg/mL

Buffer: PBS, 0.09 % Sodium Azide

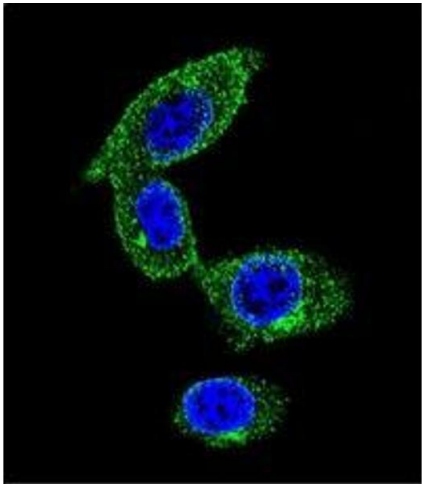
Preservative: Sodium azide

Precaution of Use: This product contains sodium azide: a POISONOUS AND HAZARDOUS SUBSTANCE which should be handled by trained staff only.

Handling Advice: Avoid repeated freezing and thawing.

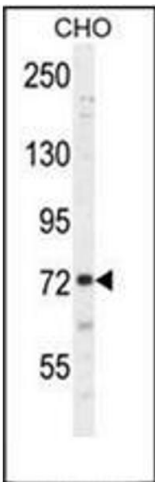
Storage: 4 °C/-20 °C

Storage Comment: Store undiluted at 2-8 °C for one month or (in aliquots) at -20 °C for longer.



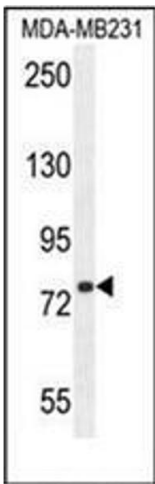
Immunofluorescence

Image 1. Confocal immunofluorescent analysis of SORBS1 / Ponsinin Antibody with MDA-MB231 cell followed by Alexa Fluor 488-conjugated goat anti-rabbit IgG (green). DAPI was used to stain the cell nuclear (blue).



Western Blotting

Image 2. Western blot analysis of SORBS1 / Ponsinin Antibody in CHO cell line lysates (35ug/lane). This demonstrates the SORBS1 antibody detected the SORBS1 protein (arrow).



Western Blotting

Image 3. Western blot analysis of SORBS1 / Ponsinin Antibody in MDA-MB231 cell line lysates (35ug/lane). This demonstrates the SOCat. #S1 antibody detected the SORBS1 protein (arrow).