

Datasheet for ABIN954888

anti-Sorting Nexin 2 antibody (C-Term)



[Go to Product page](#)

1 Image

Overview

Quantity:	0.4 mL
Target:	Sorting Nexin 2 (SNX2)
Binding Specificity:	AA 456-485, C-Term
Reactivity:	Human
Host:	Rabbit
Clonality:	Polyclonal
Conjugate:	This Sorting Nexin 2 antibody is un-conjugated
Application:	Western Blotting (WB), Enzyme Immunoassay (EIA)

Product Details

Immunogen:	Synthetic peptide - KLH conjugated - corresponding to the C-terminal region (between 456-485aa) of human Sorting nexin-2 (SNX2).
Isotype:	Ig Fraction
Specificity:	This antibody detects human Sorting nexin-2 (SNX2).
Cross-Reactivity (Details):	Species reactivity (tested):Human
Purification:	Purified through a protein A column; followed by peptide affinity purification.

Target Details

Target:	Sorting Nexin 2 (SNX2)
Alternative Name:	Sorting Nexin-2 (SNX2) (SNX2 Products)

Target Details

Background:	The SNX2 gene encodes a member of the sorting nexin family. Members of this family contain a phox (PX) domain, which is a phosphoinositide binding domain, and are involved in intracellular trafficking. This protein associates with formin-binding protein 17, but its function is unknown. This protein may form oligomeric complexes with family members.Synonyms: TRG-9, TRG9, Transformation-related gene 9 protein
Gene ID:	6643
NCBI Accession:	NP_003091

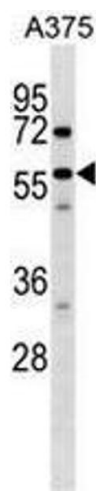
Application Details

Application Notes:	Optimal working dilution should be determined by the investigator.
Restrictions:	For Research Use only

Handling

Format:	Liquid
Concentration:	0.25 mg/mL
Buffer:	PBS with 0.09 % (W/V) Sodium Azide.
Preservative:	Sodium azide
Precaution of Use:	This product contains sodium azide: a POISONOUS AND HAZARDOUS SUBSTANCE which should be handled by trained staff only.
Handling Advice:	Avoid repeated freezing and thawing.

Images



Western Blotting

Image 1. Western blot analysis in A375 cell line lysates (35ug/lane) using Sorting nexin-2 (SNX2) Antibody . This demonstrates the SNX2 antibody detected the SNX2 protein (arrow).