

Datasheet for ABIN954890

anti-SNX25 antibody (Middle Region)[Go to Product page](#)**1** Image

Overview

Quantity:	0.4 mL
Target:	SNX25
Binding Specificity:	AA 398-426, Middle Region
Reactivity:	Human
Host:	Rabbit
Clonality:	Polyclonal
Conjugate:	This SNX25 antibody is un-conjugated
Application:	Western Blotting (WB), Enzyme Immunoassay (EIA)

Product Details

Immunogen:	Synthetic peptide - KLH conjugated - corresponding to the central region (between 398-426aa) of human Sorting nexin-25 (SNX25)
Isotype:	Ig Fraction
Specificity:	This antibody recognizes Sorting nexin-25 (SNX25).
Cross-Reactivity (Details):	Species reactivity (tested):Human
Purification:	Purified through a Protein A column followed by peptide affinity purification

Target Details

Target:	SNX25
Alternative Name:	Sorting Nexin-25 (SNX25) (SNX25 Products)

Target Details

Background:	SNX25 may be involved in several stages of intracellular trafficking (By similarity).
Gene ID:	83891
NCBI Accession:	NP_114159
Pathways:	Regulation of G-Protein Coupled Receptor Protein Signaling

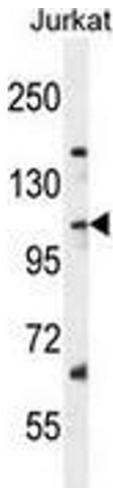
Application Details

Application Notes:	Optimal working dilution should be determined by the investigator.
Restrictions:	For Research Use only

Handling

Format:	Liquid
Concentration:	0.25 mg/mL
Buffer:	PBS with 0.09 % (W/V) Sodium azide
Preservative:	Sodium azide
Precaution of Use:	This product contains sodium azide: a POISONOUS AND HAZARDOUS SUBSTANCE which should be handled by trained staff only.
Handling Advice:	Avoid repeated freezing and thawing.
Storage:	4 °C/-20 °C
Storage Comment:	Store undiluted at 2-8 °C for one month or (in aliquots) at -20 °C for longer.

Images



Western Blotting

Image 1. Western blot analysis in Jurkat cell line lysates (35ug/lane) using Sorting nexin-25 (SNX25) Antibody . This demonstrates the SNX25 antibody detected the SNX25 protein (arrow).