

Datasheet for ABIN954894
anti-SP1 antibody (C-Term)



[Go to Product page](#)

4 Images

Overview

Quantity:	0.4 mL
Target:	SP1
Binding Specificity:	AA 684-715, C-Term
Reactivity:	Human
Host:	Rabbit
Clonality:	Polyclonal
Conjugate:	This SP1 antibody is un-conjugated
Application:	Western Blotting (WB), Immunofluorescence (IF), Immunohistochemistry (Paraffin-embedded Sections) (IHC (p)), Flow Cytometry (FACS), Enzyme Immunoassay (EIA)

Product Details

Immunogen:	Synthetic peptide - KLH conjugated - corresponding to the C-terminal region (between 684-715aa) of human SP1 / TSFP1
Isotype:	Ig Fraction
Specificity:	This antibody recognizes SP1 / TSFP1 at C-term.
Cross-Reactivity (Details):	Species reactivity (tested):Human
Purification:	Purified through a Protein A column followed by peptide affinity purification

Target Details

Target:	SP1
---------	-----

Target Details

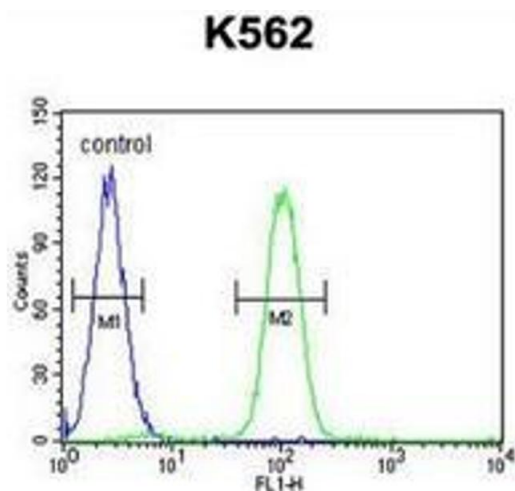
Abstract:	SP1 Products
Background:	Transcription factor that can activate or repress transcription in response to physiological and pathological stimuli. Binds with high affinity to GC-rich motifs and regulates the expression of a large number of genes involved in a variety of processes such as cell growth, apoptosis, differentiation and immune responses. Highly regulated by post-translational modifications (phosphorylations, sumoylation, proteolytic cleavage, glycosylation and acetylation). Binds also the PDGFR-alpha G-box promoter. May have a role in modulating the cellular response to DNA damage. Implicated in chromatin remodeling. Plays a role in the recruitment of SMARCA4/BRG1 on the c-FOS promoter. Plays an essential role in the regulation of FE65 gene expression.Synonyms: Transcription factor Sp1
Gene ID:	6667
NCBI Accession:	NP_003100
Pathways:	Regulation of Lipid Metabolism by PPARalpha , Myometrial Relaxation and Contraction

Application Details

Application Notes:	Optimal working dilution should be determined by the investigator.
Restrictions:	For Research Use only

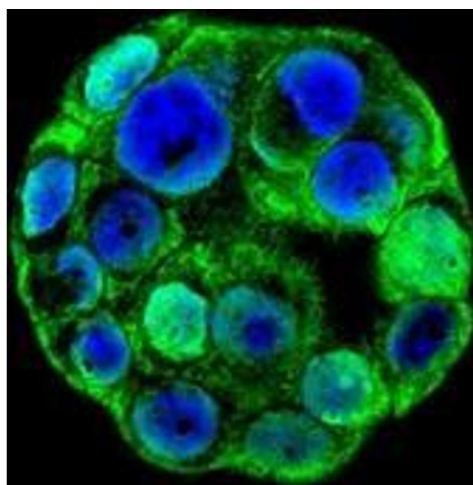
Handling

Format:	Liquid
Concentration:	0.25 mg/mL
Buffer:	PBS with 0.09 % (W/V) Sodium azide
Preservative:	Sodium azide
Precaution of Use:	This product contains sodium azide: a POISONOUS AND HAZARDOUS SUBSTANCE which should be handled by trained staff only.
Handling Advice:	Avoid repeated freezing and thawing.
Storage:	4 °C/-20 °C
Storage Comment:	Store undiluted at 2-8 °C for one month or (in aliquots) at -20 °C for longer.



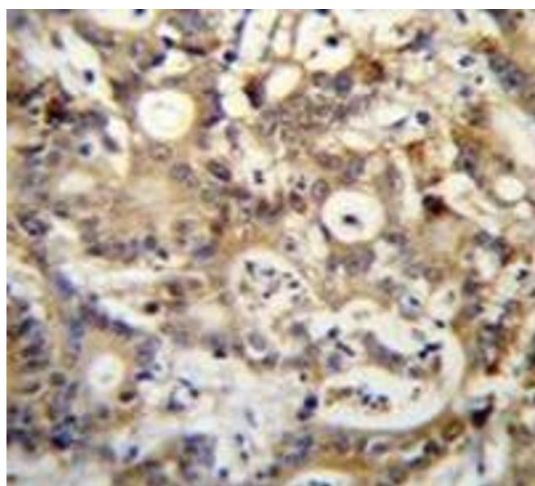
Flow Cytometry

Image 1. Flow cytometric analysis of K562 cells (right histogram) compared to a negative control cell (left histogram) using SP1 / TSFP1 Antibody (C-term), followed by FITC-conjugated goat-anti-rabbit secondary antibody. were used for the analysis.



Immunofluorescence

Image 2. Confocal immunofluorescent analysis with WiDr cells using SP1 / TSFP1 Antibody (C-term), followed by Alexa Fluor 488-conjugated goat anti-rabbit IgG (green). DAPI was used to stain the cell nuclear (blue).



Immunohistochemistry (Paraffin-embedded Sections)

Image 3. Immunohistochemistry analysis in human colon carcinoma (Formalin-fixed, Paraffin-embedded) using SP1 / TSFP1 Antibody (C-term), followed by peroxidase conjugation of the secondary antibody and DAB staining. This data demonstrates the use of SP1 / TSFP1 antibody for IHC; Clinical relevance has not been evaluated.

Please check the [product details page](#) for more images. Overall 4 images are available for ABIN954894.