

Datasheet for ABIN954896
anti-SP140 antibody (Middle Region)[Go to Product page](#)

2 Images

Overview

Quantity:	0.4 mL
Target:	SP140
Binding Specificity:	AA 279-309, Middle Region
Reactivity:	Human
Host:	Rabbit
Clonality:	Polyclonal
Conjugate:	This SP140 antibody is un-conjugated
Application:	Western Blotting (WB), Immunohistochemistry (Paraffin-embedded Sections) (IHC (p)), Enzyme Immunoassay (EIA)

Product Details

Immunogen:	KLH conjugated synthetic peptide between 279-309 amino acids from the Central region of Human SP140. Genename: SP140
Isotype:	Ig Fraction
Specificity:	This antibody recognizes Human SP140 (Center).
Purification:	Protein A column, followed by peptide affinity purification

Target Details

Target:	SP140
Alternative Name:	SP140 (SP140 Products)

Target Details

Background: Component of the nuclear body, also known as nuclear domain 10, PML oncogenic domain, and KR body. May be involved in the pathogenesis of acute promyelocytic leukemia and viral infection. Synonyms: LYSP100, Nuclear antigen Sp-140, Speckled 140 kDa

Molecular Weight: 98223 Da

Gene ID: 11262

NCBI Accession: [NP_009168](#)

Application Details

Application Notes: Optimal working dilution should be determined by the investigator.

Restrictions: For Research Use only

Handling

Format: Liquid

Concentration: 0.25 mg/mL

Buffer: PBS containing 0.09 % (W/V) Sodium Azide as preservative

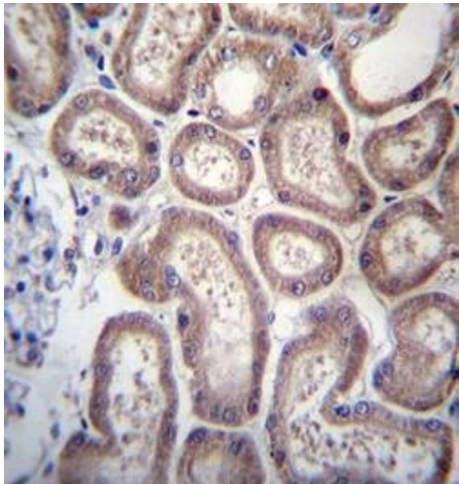
Preservative: Sodium azide

Precaution of Use: This product contains sodium azide: a POISONOUS AND HAZARDOUS SUBSTANCE which should be handled by trained staff only.

Handling Advice: Avoid repeated freezing and thawing.

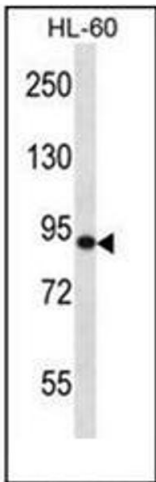
Storage: 4 °C/-20 °C

Storage Comment: Store undiluted at 2-8 °C for one month or (in aliquots) at -20 °C for longer.



Immunohistochemistry (Paraffin-embedded Sections)

Image 1. Formalin fixed, paraffin embedded human kidney tissue stained with SP140 Antibody followed by peroxidase conjugation of the secondary antibody and DAB staining. This data demonstrates the use of SP140 Antibody (Center) for immunohistochemistry. Clinical relevance has not been evaluated.



Western Blotting

Image 2. Western blot analysis of SP140 Antibody in HL-60 cell line lysates (35ug/lane). This demonstrates the SP140 antibody detected the SP140 protein (arrow).