



Datasheet for ABIN954903  
**anti-SPACA5 antibody (Middle Region)**



[Go to Product page](#)

2 Images

Overview

Quantity:	0.4 mL
Target:	SPACA5
Binding Specificity:	AA 47-77, Middle Region
Reactivity:	Mouse, Human
Host:	Rabbit
Clonality:	Polyclonal
Conjugate:	This SPACA5 antibody is un-conjugated
Application:	Western Blotting (WB), Immunohistochemistry (Paraffin-embedded Sections) (IHC (p)), Enzyme Immunoassay (EIA)

Product Details

Immunogen:	Synthetic peptide - KLH conjugated - corresponding to the central region (between 47-77aa) of human SPACA5.
Isotype:	Ig Fraction
Specificity:	This antibody recognizes SPACA5.
Cross-Reactivity (Details):	Species reactivity (tested):Human, Mouse
Purification:	Purified through a Protein A column followed by peptide affinity purification

Target Details

Target:	SPACA5
---------	--------

## Target Details

Alternative Name:	SPACA5 ( <a href="#">SPACA5 Products</a> )
Background:	Synonyms: A, LYZL5, Sperm acrosome-associated protein 5
Gene ID:	389852
NCBI Accession:	<a href="#">NP_001073369</a>

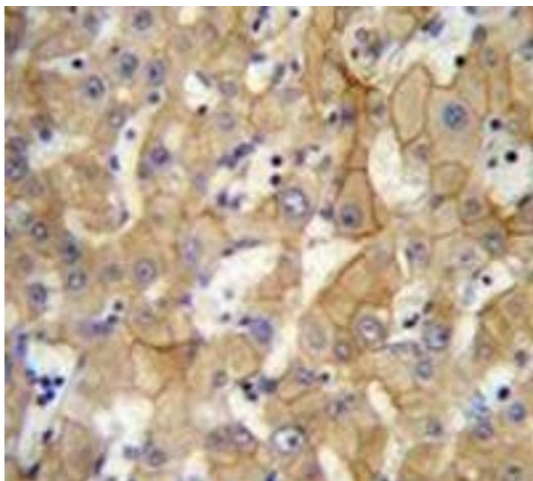
## Application Details

Application Notes:	Optimal working dilution should be determined by the investigator.
Restrictions:	For Research Use only

## Handling

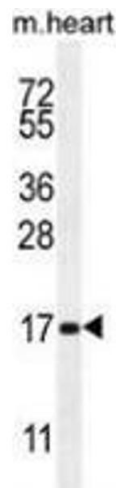
Format:	Liquid
Concentration:	0.25 mg/mL
Buffer:	PBS with 0.09 % (W/V) Sodium azide
Preservative:	Sodium azide
Precaution of Use:	This product contains sodium azide: a POISONOUS AND HAZARDOUS SUBSTANCE which should be handled by trained staff only.
Handling Advice:	Avoid repeated freezing and thawing.
Storage:	4 °C/-20 °C
Storage Comment:	Store undiluted at 2-8 °C for one month or (in aliquots) at -20 °C for longer.

## Images



### Immunohistochemistry (Paraffin-embedded Sections)

**Image 1.** Immunohistochemistry analysis in human liver tissue (Formalin-fixed, Paraffin-embedded) using SPACA5 Antibody , followed by peroxidase conjugation of the secondary antibody and DAB staining. This data demonstrates the use of SPACA5 antibody for IHC; Clinical relevance has not been evaluated.



### Western Blotting

**Image 2.** Western blot analysis in mouse heart tissue lysates (35ug/lane) using SPACA5 Antibody . This demonstrates the SPACA5 antibody detected the SPACA5 protein (arrow).