

Datasheet for ABIN954916
anti-SPDYE3 antibody (Middle Region)[Go to Product page](#)

3 Images

Overview

Quantity:	0.4 mL
Target:	SPDYE3
Binding Specificity:	AA 85-114, Middle Region
Reactivity:	Human
Host:	Rabbit
Clonality:	Polyclonal
Conjugate:	This SPDYE3 antibody is un-conjugated
Application:	Western Blotting (WB), Flow Cytometry (FACS), Immunohistochemistry (Paraffin-embedded Sections) (IHC (p)), Enzyme Immunoassay (EIA)

Product Details

Immunogen:	KLH conjugated synthetic peptide between 85-114 amino acids from the Central region of Human SPDYE3. Genename: SPDYE3
Isotype:	Ig Fraction
Specificity:	This antibody recognizes Human SPDYE3 (Center).
Purification:	Protein A column, followed by peptide affinity purification

Target Details

Target:	SPDYE3
Alternative Name:	SPDYE3 (SPDYE3 Products)

Target Details

Background:	Synonyms: Speedy protein E3
Molecular Weight:	63895 Da
Gene ID:	441272
NCBI Accession:	NP_001004351

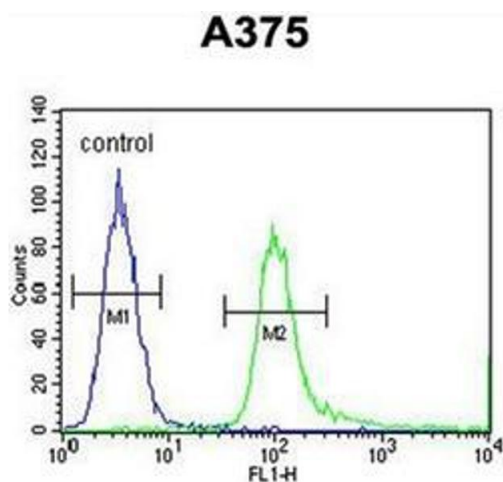
Application Details

Application Notes:	Optimal working dilution should be determined by the investigator.
Restrictions:	For Research Use only

Handling

Format:	Liquid
Concentration:	0.25 mg/mL
Buffer:	PBS containing 0.09 % (W/V) Sodium Azide as preservative
Preservative:	Sodium azide
Precaution of Use:	This product contains sodium azide: a POISONOUS AND HAZARDOUS SUBSTANCE which should be handled by trained staff only.
Handling Advice:	Avoid repeated freezing and thawing.
Storage:	4 °C/-20 °C
Storage Comment:	Store undiluted at 2-8 °C for one month or (in aliquots) at -20 °C for longer.

Validation report #100923 for Western Blotting (WB)



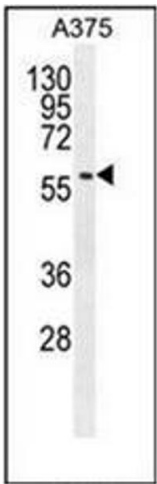
Flow Cytometry

Image 1. Flow cytometric analysis of A375 cells using SPDYE3 Antibody (right histogram) compared to a negative control cell (left histogram). FITC-conjugated goat-anti-rabbit secondary antibodies were used for the analysis.



Immunohistochemistry (Paraffin-embedded Sections)

Image 2. Formalin fixed, paraffin embedded human cervical tissue stained with SPDYE3 Antibody followed by peroxidase conjugation of the secondary antibody and DAB staining. This data demonstrates the use of the SPDYE3 antibody (Center) for immunohistochemistry. Clinical relevance has not been evaluated.



Western Blotting

Image 3. Western blot analysis of SPDYE3 Antibody in A375 cell line lysates (35ug/lane). This demonstrates the SPDYE3 antibody detected the SPDYE3 protein (arrow).