



[Go to Product page](#)

Datasheet for ABIN954918
anti-SPDYE5 antibody (N-Term)

2 Images

Overview

Quantity:	0.4 mL
Target:	SPDYE5
Binding Specificity:	N-Term
Reactivity:	Human
Host:	Rabbit
Clonality:	Polyclonal
Conjugate:	This SPDYE5 antibody is un-conjugated
Application:	Western Blotting (WB), Flow Cytometry (FACS), Enzyme Immunoassay (EIA)

Product Details

Isotype:	Ig Fraction
Specificity:	This antibody recognizes Human SPDYE5 (N-term).
Purification:	Affinity Chromatography on Protein A

Target Details

Target:	SPDYE5
Alternative Name:	SPDYE5 (SPDYE5 Products)
Background:	Synonyms: Putative speedy protein E5
Molecular Weight:	40483 Da
Gene ID:	442590

Target Details

NCBI Accession: [NP_001092905](#)

Application Details

Application Notes: Optimal working dilution should be determined by the investigator.

Restrictions: For Research Use only

Handling

Format: Liquid

Concentration: 0.25 mg/mL

Buffer: PBS, 0.09 % Sodium Azide

Preservative: Sodium azide

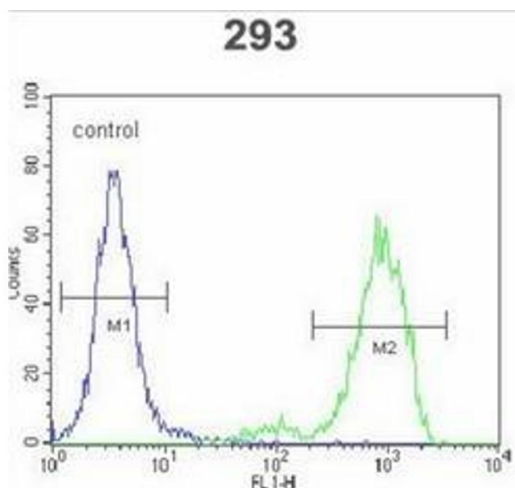
Precaution of Use: This product contains sodium azide: a POISONOUS AND HAZARDOUS SUBSTANCE which should be handled by trained staff only.

Handling Advice: Avoid repeated freezing and thawing.

Storage: 4 °C/-20 °C

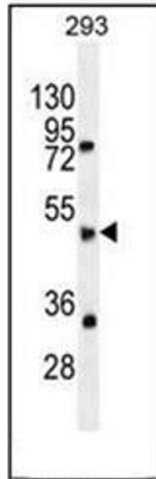
Storage Comment: Store undiluted at 2-8 °C for one month or (in aliquots) at -20 °C for longer.

Images



Flow Cytometry

Image 1. Flow cytometric analysis of 293 cells using SPDYE5 Antibody (N-term) Cat.-No AP54012PU-N (right histogram) compared to a negative control cell (left histogram). FITC-conjugated goat-anti-rabbit secondary antibodies were used for the analysis.



Western Blotting

Image 2. Western blot analysis of SPDYE5 Antibody (N-term) in 293 cell line lysates (35ug/lane). This demonstrates the SPDYE5 antibody detected the SPDYE5 protein (arrow).