



Datasheet for ABIN954919  
**anti-NSP5 antibody (Middle Region)**



[Go to Product page](#)

5 Images

Overview

Quantity:	0.4 mL
Target:	NSP5 (SPECC1)
Binding Specificity:	AA 712-741, Middle Region
Reactivity:	Human, Mouse
Host:	Rabbit
Clonality:	Polyclonal
Conjugate:	This NSP5 antibody is un-conjugated
Application:	Western Blotting (WB), Immunofluorescence (IF), Flow Cytometry (FACS), Immunohistochemistry (Paraffin-embedded Sections) (IHC (p)), Enzyme Immunoassay (EIA)

Product Details

Immunogen:	KLH conjugated synthetic peptide between 712-741 amino acids from the Central region of Human SPECC1 Gene name: SPECC1
Isotype:	Ig Fraction
Specificity:	This antibody recognizes Human and Mouse SPECC1 (Center).
Purification:	Affinity Chromatography on Protein A

Target Details

Target:	NSP5 (SPECC1)
Alternative Name:	SPECC1 ( <a href="#">SPECC1 Products</a> )

## Target Details

Background: Synonyms: CYTSA, Cytospin-A, KIAA0376, L

Molecular Weight: 124602 Da

Gene ID: 23384

NCBI Accession: [NP\\_001138940](#)

## Application Details

Application Notes: Optimal working dilution should be determined by the investigator.

Restrictions: For Research Use only

## Handling

Format: Liquid

Concentration: 0.25 mg/mL

Buffer: PBS, 0.09 % Sodium Azide

Preservative: Sodium azide

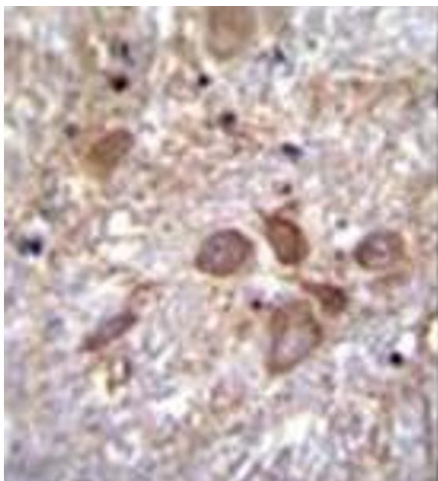
Precaution of Use: This product contains sodium azide: a POISONOUS AND HAZARDOUS SUBSTANCE which should be handled by trained staff only.

Handling Advice: Avoid repeated freezing and thawing.

Storage: 4 °C/-20 °C

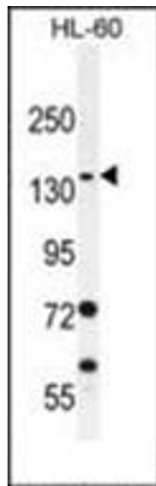
Storage Comment: Store undiluted at 2-8 °C for one month or (in aliquots) at -20 °C for longer.

## Images



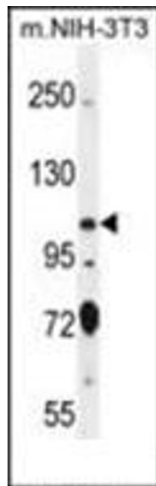
### Immunohistochemistry (Paraffin-embedded Sections)

**Image 1.** Formalin fixed, paraffin embedded human brain tissue stained with SPECC1 Antibody (Center) followed by peroxidase conjugation of the secondary antibody and DAB staining. This data demonstrates the use of SPECC1 Antibody (Center) for immunohistochemistry. Clinical relevance has not been evaluated.



#### Western Blotting

**Image 2.** Western blot analysis of SPECC1 Antibody (Center) in HL-60 cell line lysates (35ug/lane). This demonstrates the SPECC1 antibody detected the SPECC1 protein (arrow).



#### Western Blotting

**Image 3.** Western blot analysis of SPECC1 Antibody (Center) in Mouse NIH-3T3 cell line lysates (35ug/lane). This demonstrates the SPECC1 antibody detected the SPECC1 protein (arrow).

Please check the [product details page](#) for more images. Overall 5 images are available for ABIN954919.