



Datasheet for ABIN954923
anti-SPEM1 antibody (Middle Region)



[Go to Product page](#)

2 Images

Overview

| | |
|----------------------|---|
| Quantity: | 0.4 mL |
| Target: | SPEM1 |
| Binding Specificity: | AA 114-144, Middle Region |
| Reactivity: | Human |
| Host: | Rabbit |
| Clonality: | Polyclonal |
| Conjugate: | This SPEM1 antibody is un-conjugated |
| Application: | Western Blotting (WB), Enzyme Immunoassay (EIA) |

Product Details

| | |
|---------------|---|
| Immunogen: | KLH conjugated synthetic peptide between 114-144 amino acids from the Central region of Human SPEM1 Genename: SPEM1 |
| Isotype: | Ig Fraction |
| Specificity: | This antibody recognizes Human SPEM1 (center). |
| Purification: | Affinity Chromatography on Protein A |

Target Details

| | |
|-------------------|---|
| Target: | SPEM1 |
| Alternative Name: | SPEM1 (SPEM1 Products) |
| Background: | SPEM1 is required for proper cytoplasm removal during spermatogenesis (By |

Target Details

similarity).Synonyms: C17orf83, Spermatid maturation protein 1

Molecular Weight: 34773 Da

Gene ID: 374768

NCBI Accession: [NP_955371](#)

Application Details

Application Notes: Optimal working dilution should be determined by the investigator.

Restrictions: For Research Use only

Handling

Format: Liquid

Concentration: 0.25 mg/mL

Buffer: PBS, 0.09 % Sodium Azide

Preservative: Sodium azide

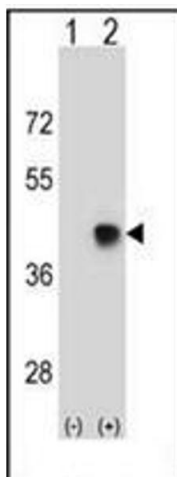
Precaution of Use: This product contains sodium azide: a POISONOUS AND HAZARDOUS SUBSTANCE which should be handled by trained staff only.

Handling Advice: Avoid repeated freezing and thawing.

Storage: 4 °C/-20 °C

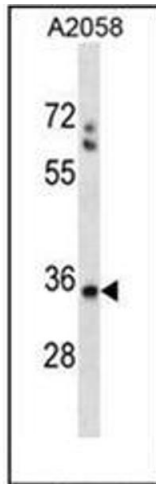
Storage Comment: Store undiluted at 2-8 °C for one month or (in aliquots) at -20 °C for longer.

Images



Western Blotting

Image 1. Western blot analysis of SPEM1 (arrow) using SPEM1 Antibody (Center) Cat.-No AP54014PU-N. 293 cell lysates (2 ug/lane) either nontransfected (Lane 1) or transiently transfected (Lane 2) with the SPEM1 gene.



Western Blotting

Image 2. Western blot analysis of SPEM1 Antibody (Center) in A2058 cell line lysates (35ug/lane). This demonstrates the SPEM1 antibody detected the SPEM1 protein (arrow).