

Datasheet for ABIN954930
anti-SPINK8 antibody (C-Term)[Go to Product page](#)

1 Image

Overview

Quantity:	0.4 mL
Target:	SPINK8
Binding Specificity:	AA 62-91, C-Term
Reactivity:	Human
Host:	Rabbit
Clonality:	Polyclonal
Conjugate:	This SPINK8 antibody is un-conjugated
Application:	Western Blotting (WB), Enzyme Immunoassay (EIA)

Product Details

Immunogen:	KLH conjugated synthetic peptide between 62-91 amino acids from the C-terminal region of human SPINK8
Isotype:	Ig Fraction
Specificity:	This antibody reacts to SPINK8.
Cross-Reactivity (Details):	Species reactivity (tested):Human.
Purification:	Affinity chromatography on Protein A

Target Details

Target:	SPINK8
Alternative Name:	SPINK8 (SPINK8 Products)

Target Details

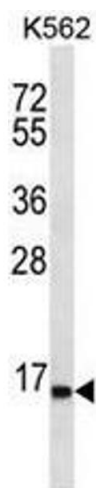
Background:	SPINK8 is probable serine protease inhibitor (By similarity).Synonyms: Serine protease inhibitor Kazal-type 8
Molecular Weight:	10821 Da
Gene ID:	646424
NCBI Accession:	NP_001073994

Application Details

Application Notes:	Optimal working dilution should be determined by the investigator.
Restrictions:	For Research Use only

Handling

Format:	Liquid
Concentration:	0.25 mg/mL
Buffer:	PBS, 0.09 % (W/V) Sodium azide
Preservative:	Sodium azide
Precaution of Use:	This product contains sodium azide: a POISONOUS AND HAZARDOUS SUBSTANCE which should be handled by trained staff only.
Handling Advice:	Avoid repeated freezing and thawing.
Storage:	4 °C/-20 °C
Storage Comment:	Store undiluted at 2-8 °C for one month or (in aliquots) at -20 °C for longer.



Western Blotting

Image 1. SPINK8 Antibody (C-term) western blot analysis in K562 cell line lysates (35µg/lane). This demonstrates the SPINK8 antibody detected the SPINK8 protein (arrow).