

Datasheet for ABIN954932
anti-SPIRE2 antibody (Middle Region)



[Go to Product page](#)

1 Image

Overview

Quantity:	0.4 mL
Target:	SPIRE2
Binding Specificity:	AA 292-321, Middle Region
Reactivity:	Human, Mouse
Host:	Rabbit
Clonality:	Polyclonal
Conjugate:	This SPIRE2 antibody is un-conjugated
Application:	Western Blotting (WB), Enzyme Immunoassay (EIA)

Product Details

Immunogen:	KLH conjugated synthetic peptide between 292-321 amino acids from the Central region of Human SPIRE2 Gene name: SPIRE2
Isotype:	Ig Fraction
Specificity:	This antibody recognizes SPIRE2 (Center).
Cross-Reactivity (Details):	Species reactivity (tested): Human, Mouse.
Purification:	Affinity Chromatography on Protein A

Target Details

Target:	SPIRE2
Alternative Name:	SPIRE2 (SPIRE2 Products)

Target Details

Background: Acts as a actin nucleation factor, remains associated with the slow-growing pointed end of the new filament. Involved in vesicle transport processes providing a novel link between actin organization and intracellular transport (By similarity).Synonyms: KIAA1832, Protein spire homolog 2, SPIR2, Spir-2

Gene ID: 84501

NCBI Accession: [NP_115827](#)

Application Details

Application Notes: Optimal working dilution should be determined by the investigator.

Restrictions: For Research Use only

Handling

Format: Liquid

Concentration: 0.25 mg/mL

Buffer: PBS, 0.09 % (W/V) Sodium Azide

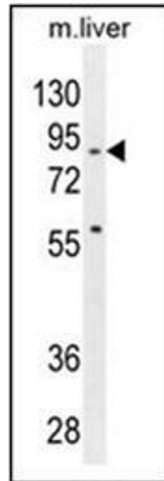
Preservative: Sodium azide

Precaution of Use: This product contains sodium azide: a POISONOUS AND HAZARDOUS SUBSTANCE which should be handled by trained staff only.

Handling Advice: Avoid repeated freezing and thawing.

Storage: 4 °C/-20 °C

Storage Comment: Store the antibody undiluted at 2-8 °C for one month or (in aliquots) at -20 °C for longer.



Western Blotting

Image 1. Western blot analysis in mouse liver tissue lysates (35 µg/lane) using SPIRE2 antibody (Center) Cat.-No AP54024PU-N. This demonstrates the SPIRE2 antibody detected the SPIRE2 protein (arrow).