

Datasheet for ABIN954939  
**anti-SPOPL antibody (Middle Region)**[Go to Product page](#)

## 2 Images

## Overview

Quantity:	0.4 mL
Target:	SPOPL
Binding Specificity:	AA 228-357, Middle Region
Reactivity:	Human
Host:	Rabbit
Clonality:	Polyclonal
Conjugate:	This SPOPL antibody is un-conjugated
Application:	Western Blotting (WB), Immunohistochemistry (Paraffin-embedded Sections) (IHC (p)), Enzyme Immunoassay (EIA)

## Product Details

Immunogen:	Synthetic peptide - KLH conjugated - corresponding to the central region (between 228-357aa) of human SPOPL.
Isotype:	Ig Fraction
Specificity:	This antibody recognizes SPOPL.
Cross-Reactivity (Details):	Species reactivity (tested):Human
Purification:	Purified through a Protein A column followed by peptide affinity purification

## Target Details

Target:	SPOPL
---------	-------

## Target Details

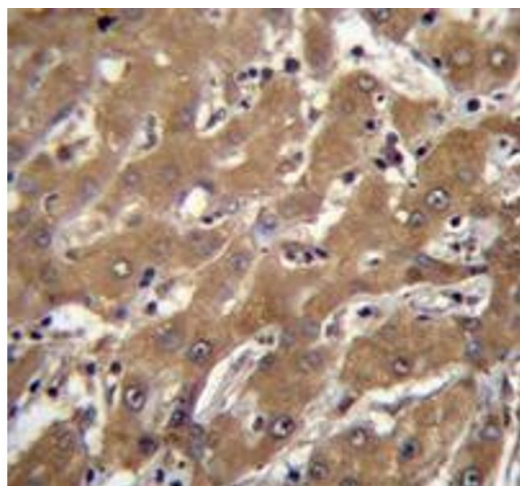
Alternative Name:	SPOPL ( <a href="#">SPOPL Products</a> )
Background:	In complex with a cullin, may act in ubiquitination and proteasomal degradation processes (By similarity).Synonyms: HIB homolog 2, Roadkill homolog 2, Speckle-type POZ protein-like
Gene ID:	339745
NCBI Accession:	<a href="#">NP_001001664</a>

## Application Details

Application Notes:	Optimal working dilution should be determined by the investigator.
Restrictions:	For Research Use only

## Handling

Format:	Liquid
Concentration:	0.25 mg/mL
Buffer:	PBS with 0.09 % (W/V) Sodium azide
Preservative:	Sodium azide
Precaution of Use:	This product contains sodium azide: a POISONOUS AND HAZARDOUS SUBSTANCE which should be handled by trained staff only.
Handling Advice:	Avoid repeated freezing and thawing.
Storage:	4 °C/-20 °C
Storage Comment:	Store undiluted at 2-8 °C for one month or (in aliquots) at -20 °C for longer.



#### Immunohistochemistry (Paraffin-embedded Sections)

**Image 1.** Immunohistochemistry analysis in human liver tissue (Formalin-fixed, Paraffin-embedded) using SPOPL Antibody , followed by peroxidase conjugation of the secondary antibody and DAB staining. This data demonstrates the use of SPOPL antibody for IHC; Clinical relevance has not been evaluated.



#### Western Blotting

**Image 2.** Western blot analysis in UM cell line lysates (35ug/lane) using SPOPL Antibody . This demonstrates the SPOPL antibody detected the SPOPL protein (arrow).