



[Go to Product page](#)

Datasheet for ABIN954940
anti-SPRED3 antibody (N-Term)

2 Images

Overview

| | |
|----------------------|--|
| Quantity: | 0.4 mL |
| Target: | SPRED3 |
| Binding Specificity: | AA 37-67, N-Term |
| Reactivity: | Human, Mouse |
| Host: | Rabbit |
| Clonality: | Polyclonal |
| Conjugate: | This SPRED3 antibody is un-conjugated |
| Application: | Western Blotting (WB), Immunohistochemistry (Paraffin-embedded Sections) (IHC (p)), Enzyme Immunoassay (EIA) |

Product Details

| | |
|-----------------------------|---|
| Immunogen: | Synthetic peptide - KLH conjugated - corresponding to the N-terminal region (between 37-67aa) of human SPRED3. |
| Isotype: | Ig Fraction |
| Specificity: | This antibody recognizes SPRED3 at N-term. |
| Cross-Reactivity (Details): | Species reactivity (tested):Human, Mouse |
| Purification: | Purified through a Protein A column followed by peptide affinity purification |

Target Details

| | |
|---------|--------|
| Target: | SPRED3 |
|---------|--------|

Target Details

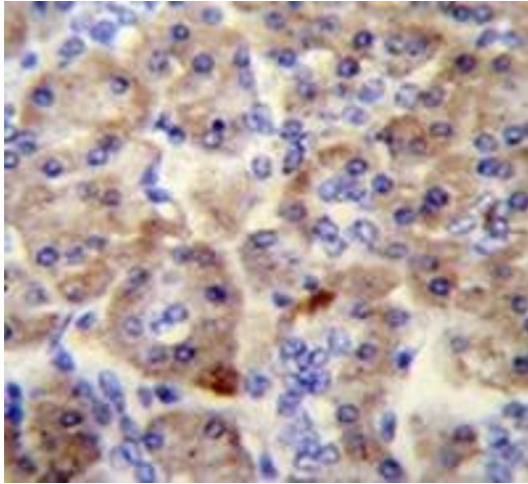
| | |
|-------------------|--|
| Alternative Name: | SPRED3 (SPRED3 Products) |
| Background: | SPRED3 is a member of the Sprouty (see SPRY1, MIM 602465)/SPRED family of proteins that regulate growth factor-induced activation of the MAP kinase cascade [Nonami et al., 2004, PubMed 15465815].Synonyms: EVH1 domain-containing protein 3, Sprouty-related |
| Gene ID: | 399473 |
| NCBI Accession: | NP_001035987 |

Application Details

| | |
|--------------------|--|
| Application Notes: | Optimal working dilution should be determined by the investigator. |
| Restrictions: | For Research Use only |

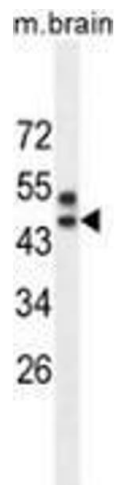
Handling

| | |
|--------------------|--|
| Format: | Liquid |
| Concentration: | 0.25 mg/mL |
| Buffer: | PBS with 0.09 % (W/V) Sodium azide |
| Preservative: | Sodium azide |
| Precaution of Use: | This product contains sodium azide: a POISONOUS AND HAZARDOUS SUBSTANCE which should be handled by trained staff only. |
| Handling Advice: | Avoid repeated freezing and thawing. |
| Storage: | 4 °C/-20 °C |
| Storage Comment: | Store undiluted at 2-8 °C for one month or (in aliquots) at -20 °C for longer. |



Immunohistochemistry (Paraffin-embedded Sections)

Image 1. Immunohistochemistry analysis in human pancreas tissue (Formalin-fixed, Paraffin-embedded) using SPRED3 Antibody (N-term), followed by peroxidase conjugation of the secondary antibody and DAB staining. This data demonstrates the use of the SPRED3 antibody for IHC. Clinical relevance has not been evaluated.



Western Blotting

Image 2. Western blot analysis in mouse brain tissue lysates (35ug/lane) using SPRED3 Antibody (N-term). This demonstrates the SPRED3 antibody detected the SPRED3 protein (arrow).