

Datasheet for ABIN954941

anti-SPRR1A antibody (C-Term)



[Go to Product page](#)

1 Image

Overview

Quantity:	0.4 mL
Target:	SPRR1A
Binding Specificity:	AA 60-89, C-Term
Reactivity:	Human
Host:	Rabbit
Clonality:	Polyclonal
Application:	Western Blotting (WB), Enzyme Immunoassay (EIA)

Product Details

Immunogen:	Synthetic peptide - KLH conjugated - corresponding to the C-terminal region (between 60-89aa) of human SPRR1A / Cornifin-A
Isotype:	Ig Fraction
Specificity:	This antibody recognizes SPRR1A / Cornifin-A at C-term.
Cross-Reactivity (Details):	Species reactivity (tested): Human
Purification:	Purified through a Protein A column followed by peptide affinity purification

Target Details

Target:	SPRR1A
Alternative Name:	SPRR1A / Cornifin-A (SPRR1A Products)
Background:	The SPRR1A gene encodes a cross-linked envelope protein of keratinocytes. It is a keratinocyte

Target Details

protein that first appears in the cell cytosol, but ultimately becomes cross-linked to membrane proteins by transglutaminase. All that results in the formation of an insoluble envelope beneath the plasma membrane.Synonyms: SPR-IA, SPRK, Small proline-rich protein IA

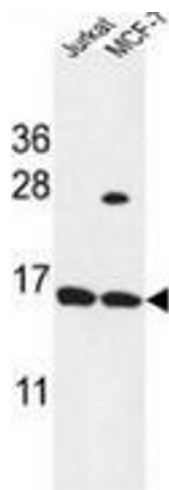
Gene ID:	6698
NCBI Accession:	NP_001186757

Application Details

Application Notes:	Optimal working dilution should be determined by the investigator.
Restrictions:	For Research Use only

Handling

Format:	Liquid
Concentration:	0.25 mg/mL
Buffer:	PBS with 0.09 % (W/V) Sodium azide
Preservative:	Sodium azide
Precaution of Use:	This product contains sodium azide: a POISONOUS AND HAZARDOUS SUBSTANCE which should be handled by trained staff only.
Handling Advice:	Avoid repeated freezing and thawing.
Storage:	4 °C/-20 °C
Storage Comment:	Store undiluted at 2-8 °C for one month or (in aliquots) at -20 °C for longer.



Western Blotting

Image 1. Western blot analysis in Jurkat,MCF-7 cell line lysates (35ug/lane) using SPRR1A / Cornifin-A Antibody (C-term). This demonstrates the Cornifin-A antibody detected the Cornifin-Aprotein (arrow).