



[Go to Product page](#)

Datasheet for ABIN954942
anti-SPRR1B antibody (C-Term)

2 Images

Overview

Quantity:	0.4 mL
Target:	SPRR1B
Binding Specificity:	AA 60-89, C-Term
Reactivity:	Human
Host:	Rabbit
Clonality:	Polyclonal
Conjugate:	This SPRR1B antibody is un-conjugated
Application:	Western Blotting (WB), Immunohistochemistry (Paraffin-embedded Sections) (IHC (p)), Enzyme Immunoassay (EIA)

Product Details

Immunogen:	Synthetic peptide - KLH conjugated - corresponding to the C-terminal region (between 60-89aa) of human SPRR1B / Cornifin-B
Isotype:	Ig Fraction
Specificity:	This antibody recognizes SPRR1B / Cornifin-B at C-term.
Cross-Reactivity (Details):	Species reactivity (tested):Human
Purification:	Purified through a Protein A column followed by peptide affinity purification

Target Details

Target:	SPRR1B
---------	--------

Target Details

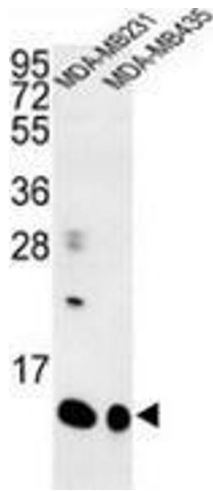
Alternative Name:	SPRR1B / Cornifin-B (SPRR1B Products)
Background:	SPRR1B/Cornifin-B is a keratinocyte protein that first appears in the cell cytosol, but ultimately becomes cross-linked to membrane proteins by transglutaminase. All that results in the formation of an insoluble envelope beneath the plasma membrane. Cornifin-B can function as both amine donor and acceptor in transglutaminase-mediated cross-linkage. Synonyms: SPR-IB, Small proline-rich protein IB
Gene ID:	6699
NCBI Accession:	NP_003116

Application Details

Application Notes:	Optimal working dilution should be determined by the investigator.
Restrictions:	For Research Use only

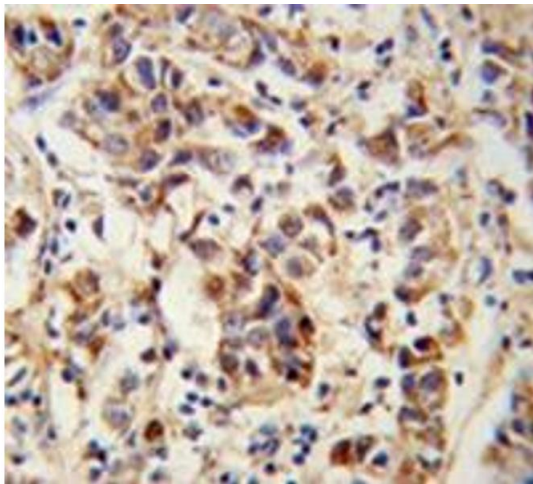
Handling

Format:	Liquid
Concentration:	0.25 mg/mL
Buffer:	PBS with 0.09 % (W/V) Sodium azide
Preservative:	Sodium azide
Precaution of Use:	This product contains sodium azide: a POISONOUS AND HAZARDOUS SUBSTANCE which should be handled by trained staff only.
Handling Advice:	Avoid repeated freezing and thawing.
Storage:	4 °C/-20 °C
Storage Comment:	Store undiluted at 2-8 °C for one month or (in aliquots) at -20 °C for longer.



Western Blotting

Image 1. Western blot analysis of Cornifin-B (arrow) in MDA-MB231, MDA-MB435 cell line lysates (35ug/lane) using SPRR1B / Cornifin-B Antibody (C-term).



Immunohistochemistry (Paraffin-embedded Sections)

Image 2. Immunohistochemistry analysis of human breast carcinoma (Formalin-fixed, Paraffin-embedded) using SPRR1B / Cornifin-B Antibody (C-term), followed by peroxidase-conjugated secondary antibody and DAB staining. This data demonstrates the use of this antibody for IHC; Clinical relevance has not been evaluated.