

Datasheet for ABIN954943
anti-SPRR2A antibody (C-Term)[Go to Product page](#)

1 Image

Overview

Quantity:	0.4 mL
Target:	SPRR2A
Binding Specificity:	AA 51-76, C-Term
Reactivity:	Human
Host:	Rabbit
Clonality:	Polyclonal
Application:	Western Blotting (WB), Enzyme Immunoassay (EIA)

Product Details

Immunogen:	Synthetic peptide - KLH conjugated - corresponding to the C-terminal region (between 51-76aa) of human SPRR2A
Isotype:	Ig Fraction
Specificity:	This antibody recognizes SPRR2A at C-term.
Cross-Reactivity (Details):	Species reactivity (tested): Human
Purification:	Purified through a Protein A column followed by peptide affinity purification

Target Details

Target:	SPRR2A
Alternative Name:	SPRR2A (SPRR2A Products)
Background:	The SPRR2A gene encodes a cross-linked envelope protein of keratinocytes. It is a keratinocyte

Target Details

protein that first appears in the cell cytosol, but ultimately becomes cross-linked to membrane proteins by transglutaminase. All that results in the formation of an insoluble envelope beneath the plasma membrane. Synonyms: SPR-2A, Small proline-rich protein 2A

Gene ID: 6700

NCBI Accession: [NP_005979](#)

Application Details

Application Notes: Optimal working dilution should be determined by the investigator.

Restrictions: For Research Use only

Handling

Format: Liquid

Concentration: 0.25 mg/mL

Buffer: PBS with 0.09 % (W/V) Sodium azide

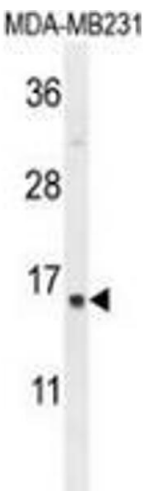
Preservative: Sodium azide

Precaution of Use: This product contains sodium azide: a POISONOUS AND HAZARDOUS SUBSTANCE which should be handled by trained staff only.

Handling Advice: Avoid repeated freezing and thawing.

Storage: 4 °C/-20 °C

Storage Comment: Store undiluted at 2-8 °C for one month or (in aliquots) at -20 °C for longer.



Western Blotting

Image 1. Western blot analysis in MDA-MB231 cell line lysates (35ug/lane) using SPRR2A Antibody (C-term). This demonstrates the SPRR2A antibody detected the SPRR2A protein (arrow).