

Datasheet for ABIN954949  
**anti-SRD5A2L2 antibody (C-Term)**[Go to Product page](#)

## 2 Images

## Overview

Quantity:	0.4 mL
Target:	SRD5A2L2 (TECRL)
Binding Specificity:	AA 332-362, C-Term
Reactivity:	Human
Host:	Rabbit
Clonality:	Polyclonal
Conjugate:	This SRD5A2L2 antibody is un-conjugated
Application:	Western Blotting (WB), Flow Cytometry (FACS), Enzyme Immunoassay (EIA)

## Product Details

Immunogen:	Synthetic peptide - KLH conjugated - corresponding to the C-terminal region (between 332-362aa) of human SRD5A2L2.
Isotype:	Ig Fraction
Specificity:	This antibody recognizes SRD5A2L2 at C-term.
Cross-Reactivity (Details):	Species reactivity (tested):Human
Purification:	Purified through a Protein A column followed by peptide affinity purification

## Target Details

Target:	SRD5A2L2 (TECRL)
Alternative Name:	SRD5A2L2 ( <a href="#">TECRL Products</a> )

## Target Details

Background:	Synonyms: 3-enoyl-CoA reductase-like, TECRL, Trans-2
Gene ID:	253017
NCBI Accession:	<a href="#">NP_001010874</a>

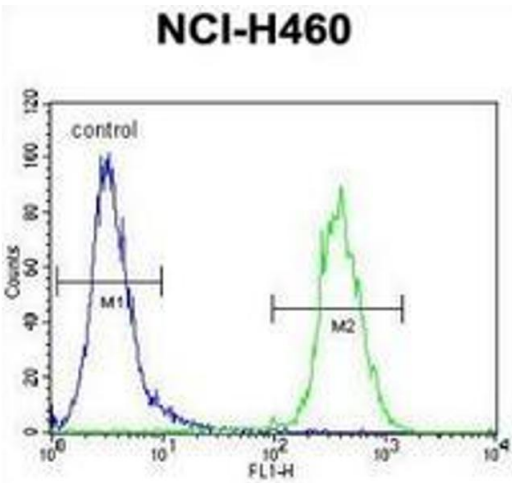
## Application Details

Application Notes:	Optimal working dilution should be determined by the investigator.
Restrictions:	For Research Use only

## Handling

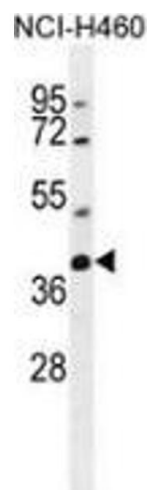
Format:	Liquid
Concentration:	0.25 mg/mL
Buffer:	PBS with 0.09 % (W/V) Sodium azide
Preservative:	Sodium azide
Precaution of Use:	This product contains sodium azide: a POISONOUS AND HAZARDOUS SUBSTANCE which should be handled by trained staff only.
Handling Advice:	Avoid repeated freezing and thawing.
Storage:	4 °C/-20 °C
Storage Comment:	Store undiluted at 2-8 °C for one month or (in aliquots) at -20 °C for longer.

## Images



### Flow Cytometry

**Image 1.** Flow cytometric analysis of NCI-H460 cells (right histogram) compared to a negative control cell (left histogram) using SRD5A2L2 Antibody (C-term), followed by FITC-conjugated goat-anti-rabbit secondary antibodies.



Western Blotting

**Image 2.** Western blot analysis in NCI-H460 cell line lysates (35ug/lane) using SRD5A2L2 Antibody (C-term). This demonstrates the SRD5A2L2 antibody detected the SRD5A2L2 protein (arrow).