



Datasheet for ABIN954954

## anti-SSC5D antibody (Middle Region)



[Go to Product page](#)

1 Image

1 Publication

### Overview

Quantity:	0.4 mL
Target:	SSC5D
Binding Specificity:	AA 868-897, Middle Region
Reactivity:	Human
Host:	Rabbit
Clonality:	Polyclonal
Conjugate:	This SSC5D antibody is un-conjugated
Application:	Western Blotting (WB), Enzyme Immunoassay (EIA)

### Product Details

Immunogen:	KLH conjugated synthetic peptide between 868-897 amino acids from the Central region of Human SSC5D
Isotype:	Ig Fraction
Specificity:	This antibody recognizes Human SSC5D (Center).
Purification:	Affinity Chromatography on Protein A

### Target Details

Target:	SSC5D
Alternative Name:	SSC5D ( <a href="#">SSC5D Products</a> )
Background:	Synonyms: Scavenger receptor cysteine-rich domain-containing protein LOC284297

## Target Details

---

Molecular Weight:	165743 Da
Gene ID:	284297
NCBI Accession:	<a href="#">NP_001138422</a>

## Application Details

---

Application Notes:	Optimal working dilution should be determined by the investigator.
Restrictions:	For Research Use only

## Handling

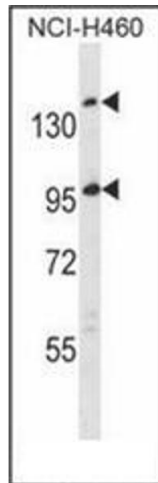
---

Format:	Liquid
Concentration:	0.25 mg/mL
Buffer:	PBS, 0.09 % Sodium Azide
Preservative:	Sodium azide
Precaution of Use:	This product contains sodium azide: a POISONOUS AND HAZARDOUS SUBSTANCE which should be handled by trained staff only.
Handling Advice:	Avoid repeated freezing and thawing.
Storage:	4 °C/-20 °C
Storage Comment:	Store undiluted at 2-8 °C for one month or (in aliquots) at -20 °C for longer.

## Publications

---

Product cited in:	Gonçalves, Castro, Henriques, Oliveira, Pinheiro, Oliveira, Sreenu, Evans, Davis, Moreira, Carmo: "Molecular cloning and analysis of SSc5D, a new member of the scavenger receptor cysteine-rich superfamily." in: <b>Molecular immunology</b> , Vol. 46, Issue 13, pp. 2585-96, (2009) ( <a href="#">PubMed</a> ).
-------------------	---



### Western Blotting

**Image 1.** Western blot analysis of SSC5D Antibody in NCI-H460 cell line lysates (35ug/lane). This demonstrates the SSC5D antibody detected the SSC5D protein (arrow).