

Datasheet for ABIN954955
anti-SSH3 antibody (C-Term)[Go to Product page](#)

4 Images

Overview

Quantity:	0.4 mL
Target:	SSH3
Binding Specificity:	AA 582-610, C-Term
Reactivity:	Human
Host:	Rabbit
Clonality:	Polyclonal
Application:	Western Blotting (WB), Immunofluorescence (IF), Flow Cytometry (FACS), Immunohistochemistry (Paraffin-embedded Sections) (IHC (p)), Enzyme Immunoassay (EIA)

Product Details

Immunogen:	KLH conjugated synthetic peptide between 582-610 amino acids from the C-terminal region of Human SSH3 Genename: SSH3
Isotype:	Ig Fraction
Specificity:	This antibody recognizes Human SSH3 (C-term).
Purification:	Protein A column, followed by peptide affinity purification

Target Details

Target:	SSH3
Alternative Name:	SSH3 (SSH3 Products)
Background:	The ADF (actin-depolymerizing factor)/cofilin family (see MIM 601442) is composed of stimulus-responsive mediators of actin dynamics. ADF/cofilin proteins are inactivated by

Target Details

kinases such as LIM domain kinase-1 (LIMK1, MIM 601329). The SSH family appears to play a role in actin dynamics by reactivating ADF/cofilin proteins in vivo (Niwa et al., 2002 [PubMed 11832213]).Synonyms: SSH-3L, SSH-like protein 3, SSH3L, Slingshot homolog 3

Molecular Weight: 72996 Da

Gene ID: 54961

NCBI Accession: [NP_060327](#)

Application Details

Application Notes: Optimal working dilution should be determined by the investigator.

Restrictions: For Research Use only

Handling

Format: Liquid

Concentration: 0.25 mg/mL

Buffer: PBS containing 0.09 % (W/V) Sodium Azide as preservative

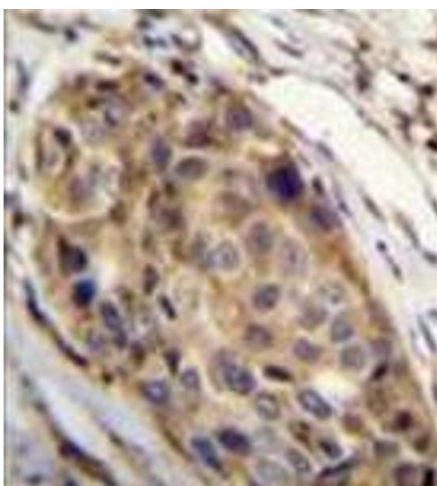
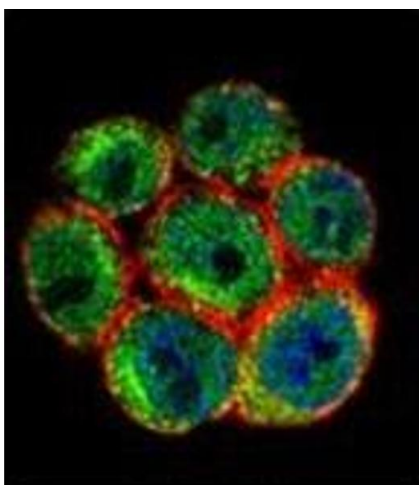
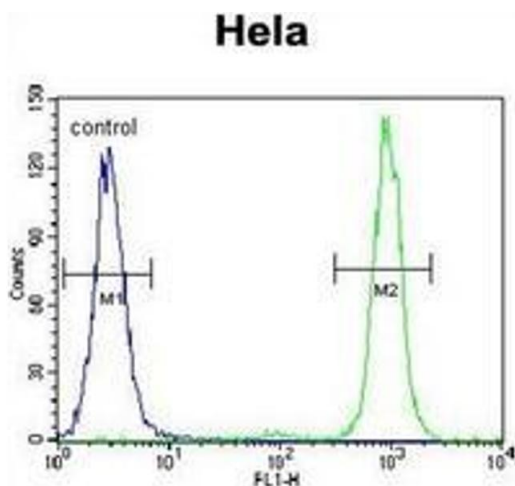
Preservative: Sodium azide

Precaution of Use: This product contains sodium azide: a POISONOUS AND HAZARDOUS SUBSTANCE which should be handled by trained staff only.

Handling Advice: Avoid repeated freezing and thawing.

Storage: 4 °C/-20 °C

Storage Comment: Store undiluted at 2-8 °C for one month or (in aliquots) at -20 °C for longer.



Flow Cytometry

Image 1. Flow cytometric analysis of HeLa cells using SSH3 Antibody (C-term) Cat.-No AP54050PU-N (right histogram) compared to a negative control cell (left histogram). FITC-conjugated goat-anti-rabbit secondary antibodies were used for the analysis.

Immunofluorescence

Image 2. Confocal immunofluorescent analysis of SSH3 Antibody (C-term) Cat.-No AP54050PU-N with HeLa cell followed by Alexa Fluor 488-conjugated goat anti-rabbit IgG (green). Actin filaments have been labeled with Alexa Fluor 555 phalloidin (red). DAPI was used to stain the cell nuclear (blue).

Immunohistochemistry (Paraffin-embedded Sections)

Image 3. Formalin fixed, paraffin embedded human breast carcinoma stained with SSH3 Antibody (C-term) followed with peroxidase conjugated to the secondary antibody and followed by DAB staining. This data demonstrates the use of SSH3 Antibody (C-term) for immunohistochemistry. Clinical relevance has not been evaluated.

Please check the [product details page](#) for more images. Overall 4 images are available for ABIN954955.