

Datasheet for ABIN954957
anti-SSR4 antibody (Middle Region)[Go to Product page](#)

1 Image

Overview

Quantity:	0.4 mL
Target:	SSR4
Binding Specificity:	AA 97-126, Middle Region
Reactivity:	Human
Host:	Rabbit
Clonality:	Polyclonal
Conjugate:	This SSR4 antibody is un-conjugated
Application:	Western Blotting (WB), Enzyme Immunoassay (EIA)

Product Details

Immunogen:	KLH conjugated synthetic peptide between 97-126 amino acids from the Central region of Human SSR4. Genename: SSR4
Isotype:	Ig Fraction
Specificity:	This antibody recognizes Human SSR4 / TRAPD (Center).
Purification:	Affinity Chromatography on Protein A

Target Details

Target:	SSR4
Alternative Name:	SSR4 / TRAPD (SSR4 Products)
Background:	SSR4, also called TRAPD, is assumed to be involved in protein secretion. It is located in the

Target Details

Xq28 region, arranged in a compact head-to-head manner with the IDH3G gene. These two genes are driven by a bidirectional promoter located between them, and encode proteins involved in unrelated biochemical pathways located in different compartments of the cell. The nontranscribed intergenic region represents only 133 bp and is embedded in a CpG island. The CpG island functions as a bidirectional promoter to initiate the transcription of both functionally unrelated genes with distinct expression patterns. SSR4 consists of six exons and is approximately 70 kb telomeric to the ALD gene. Although alternative splicing of exon 5 has not been detected in human SSR4, transcript variants missing the region homologous to human exon 5 have been detected in both *Xenopus laevis* and *Mus musculus*. Synonyms: SSR-delta, Signal sequence receptor subunit delta, TRAP-delta, Translocon-associated protein subunit delta

Molecular Weight: 18999 Da

Gene ID: 6748

NCBI Accession: [NP_001191455](#)

Application Details

Application Notes: Optimal working dilution should be determined by the investigator.

Restrictions: For Research Use only

Handling

Format: Liquid

Concentration: 0.25 mg/mL

Buffer: PBS, 0.09 % Sodium Azide

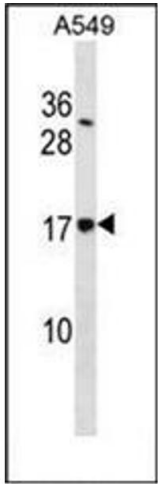
Preservative: Sodium azide

Precaution of Use: This product contains sodium azide: a POISONOUS AND HAZARDOUS SUBSTANCE which should be handled by trained staff only.

Handling Advice: Avoid repeated freezing and thawing.

Storage: 4 °C/-20 °C

Storage Comment: Store undiluted at 2-8 °C for one month or (in aliquots) at -20 °C for longer.



Western Blotting

Image 1. Western blot analysis of SSR4 / TRAPD Antibody in A549 cell line lysates (35ug/lane). This demonstrates the SSR4 antibody detected the SSR4 protein (arrow).