

Datasheet for ABIN954969
anti-STAP2 antibody (Middle Region)[Go to Product page](#)

2 Images

Overview

Quantity:	0.4 mL
Target:	STAP2
Binding Specificity:	AA 194-224, Middle Region
Reactivity:	Human
Host:	Rabbit
Clonality:	Polyclonal
Conjugate:	This STAP2 antibody is un-conjugated
Application:	Western Blotting (WB), Enzyme Immunoassay (EIA)

Product Details

Immunogen:	KLH conjugated synthetic peptide between 194-224 amino acids from the Central region of Human STAP2
Isotype:	Ig Fraction
Specificity:	This antibody recognizes Human STAP2 (Center).
Purification:	Affinity Purified

Target Details

Target:	STAP2
Alternative Name:	STAP2 / BKS (STAP2 Products)
Background:	This gene encodes the substrate of breast tumor kinase, an Src-type non-receptor tyrosine

Target Details

kinase. The encoded protein possesses domains and several tyrosine phosphorylation sites characteristic of adaptor proteins that mediate the interactions linking proteins involved in signal transduction pathways. Alternative splicing results in multiple transcript variants. Synonyms: BRK substrate, Breast tumor kinase substrate, STAP-2, Signal-transducing adaptor protein 2

Molecular Weight: 44894 Da

Gene ID: 55620

NCBI Accession: [NP_001013863](#)

Application Details

Application Notes: Optimal working dilution should be determined by the investigator.

Restrictions: For Research Use only

Handling

Format: Liquid

Concentration: 0.25 mg/mL

Buffer: PBS, 0.09 % Sodium Azide

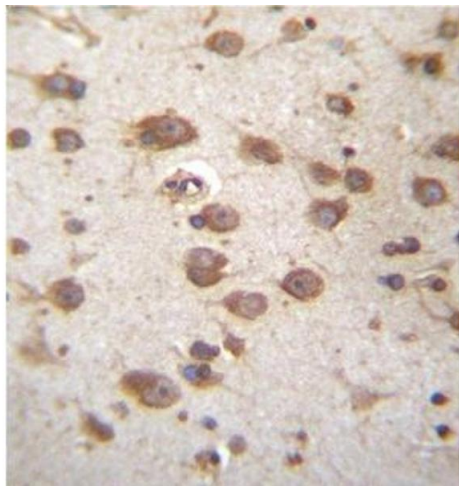
Preservative: Sodium azide

Precaution of Use: This product contains sodium azide: a POISONOUS AND HAZARDOUS SUBSTANCE which should be handled by trained staff only.

Handling Advice: Avoid repeated freezing and thawing.

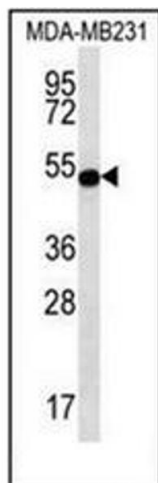
Storage: 4 °C/-20 °C

Storage Comment: Store undiluted at 2-8 °C for one month or (in aliquots) at -20 °C for longer.



Immunohistochemistry (Paraffin-embedded Sections)

Image 1. Formalin fixed and paraffin embedded human brain tissue stained with STAP2 Antibody (Center) followed by peroxidase conjugation of the secondary antibody and DAB staining. This data demonstrates the use of STAP2 Antibody (Center) for immunohistochemistry. Clinical relevance has not been evaluated.



Western Blotting

Image 2. Western blot analysis in MDA-MB231 cell line lysates (35 µg/lane) using STAP2 Antibody (Center) Cat.-No AP54064PU-N. This demonstrates the STAP2 antibody detected the STAP2 protein (arrow).