

Datasheet for ABIN954988

anti-STRA8 antibody (C-Term)**3** Images[Go to Product page](#)

Overview

Quantity:	0.4 mL
Target:	STRA8
Binding Specificity:	AA 293-323, C-Term
Reactivity:	Human
Host:	Rabbit
Clonality:	Polyclonal
Conjugate:	This STRA8 antibody is un-conjugated
Application:	Western Blotting (WB), Immunofluorescence (IF), Immunohistochemistry (Paraffin-embedded Sections) (IHC (p)), Enzyme Immunoassay (EIA)

Product Details

Immunogen:	KLH conjugated synthetic peptide between 293-323 amino acids from the C-terminal region of Human STRA8.
Isotype:	Ig Fraction
Specificity:	This antibody recognizes Human STRA8 (C-term).
Purification:	Affinity Chromatography on Protein A

Target Details

Target:	STRA8
Alternative Name:	STRA8 (STRA8 Products)

Target Details

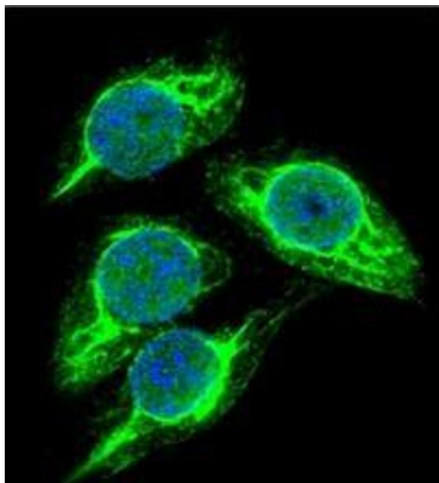
Background:	This gene encodes a retinoic acid-responsive protein. A homologous protein in mouse has been shown to be involved in the regulation of meiotic initiation in both spermatogenesis and oogenesis, though feature differences between the mouse and human proteins suggest that these homologs are not entirely functionally equivalent. It is thought that this gene may play a role in spermatogenesis in humans.Synonyms: Stimulated by retinoic acid gene 8 protein homolog
Molecular Weight:	36908 Da
Gene ID:	346673
NCBI Accession:	NP_872295

Application Details

Application Notes:	Optimal working dilution should be determined by the investigator.
Restrictions:	For Research Use only

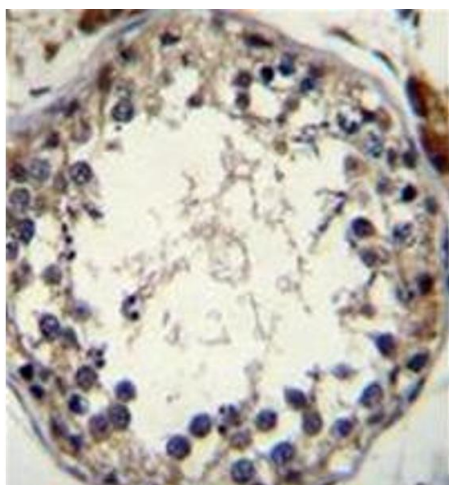
Handling

Format:	Liquid
Concentration:	0.25 mg/mL
Buffer:	PBS, 0.09 % Sodium Azide
Preservative:	Sodium azide
Precaution of Use:	This product contains sodium azide: a POISONOUS AND HAZARDOUS SUBSTANCE which should be handled by trained staff only.
Handling Advice:	Avoid repeated freezing and thawing.
Storage:	4 °C/-20 °C
Storage Comment:	Store undiluted at 2-8 °C for one month or (in aliquots) at -20 °C for longer.



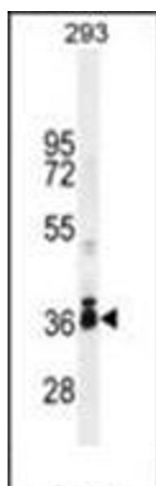
Immunofluorescence

Image 1. Confocal immunofluorescent analysis of STRA8 Antibody



Immunohistochemistry (Paraffin-embedded Sections)

Image 2. Formalin fixed and paraffin embedded human testis tissue stained with STRA8 Antibody (C-term) followed by peroxidase conjugation of the secondary antibody and DAB staining. This data demonstrates the use of STRA8 Antibody (C-term) for immunohistochemistry. Clinical relevance has not been evaluated.



Western Blotting

Image 3. Western blot analysis in 293 cell line lysates (35ug/lane) using STRA8 Antibody (C-term) Cat.-No AP54082PU-N. This demonstrates the STRA8 antibody detected the STRA8 protein (arrow).