

Datasheet for ABIN954997
anti-SULF2 antibody (C-Term)[Go to Product page](#)

2 Images

Overview

Quantity:	0.4 mL
Target:	SULF2
Binding Specificity:	AA 831-860, C-Term
Reactivity:	Human, Mouse
Host:	Rabbit
Clonality:	Polyclonal
Conjugate:	This SULF2 antibody is un-conjugated
Application:	Western Blotting (WB), Enzyme Immunoassay (EIA)

Product Details

Immunogen:	KLH conjugated synthetic peptide between 831-860 amino acids from the C-terminal region of human SULF2
Isotype:	Ig Fraction
Specificity:	This antibody reacts to SULF2.
Cross-Reactivity (Details):	Species reactivity (tested): Human and Mouse.
Purification:	Affinity chromatography on Protein A

Target Details

Target:	SULF2
Alternative Name:	SULF2 (SULF2 Products)

Target Details

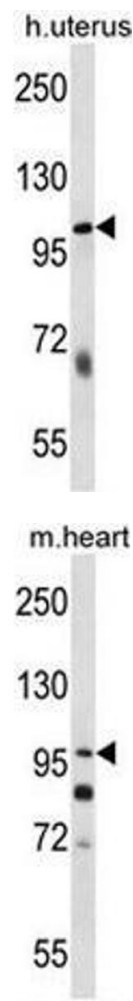
Background:	Heparan sulfate proteoglycans (HSPGs) act as coreceptors for numerous heparin-binding growth factors and cytokines and are involved in cell signaling. Heparan sulfate 6-O-endosulfatases, such as SULF2, selectively remove 6-O-sulfate groups from heparan sulfate. This activity modulates the effects of heparan sulfate by altering binding sites for signaling molecules (Dai et al., 2005 [PubMed 16192265]).Synonyms: Extracellular sulfatase Sulf-2, KIAA1247
Molecular Weight:	100455 Da
Gene ID:	55959
NCBI Accession:	NP_001155313

Application Details

Application Notes:	Optimal working dilution should be determined by the investigator.
Restrictions:	For Research Use only

Handling

Format:	Liquid
Concentration:	0.25 mg/mL
Buffer:	PBS, 0.09 % (W/V) sodium azide
Preservative:	Sodium azide
Precaution of Use:	This product contains sodium azide: a POISONOUS AND HAZARDOUS SUBSTANCE which should be handled by trained staff only.
Handling Advice:	Avoid repeated freezing and thawing.
Storage:	4 °C/-20 °C
Storage Comment:	Store the antibody undiluted at 2-8 °C for one month or (in aliquots) at -20 °C for longer.



Western Blotting

Image 1. SULF2 Antibody (C-term) western blot analysis in human normal Uterus cell line lysates (35µg/lane).This demonstrates the SULF2 antibody detected the SULF2 protein (arrow).

Western Blotting

Image 2. SULF2 Antibody (C-term) western blot analysis in mouse heart tissue lysates (35µg/lane).This demonstrates the SULF2 antibody detected the SULF2 protein (arrow).