



Datasheet for ABIN955000
anti-SULT1A3/1A4 antibody (Middle Region)



[Go to Product page](#)

1 Image

Overview

Quantity:	0.4 mL
Target:	SULT1A3/1A4
Binding Specificity:	AA 66-95, Middle Region
Reactivity:	Human
Host:	Rabbit
Clonality:	Polyclonal
Conjugate:	This SULT1A3/1A4 antibody is un-conjugated
Application:	Enzyme Immunoassay (EIA), Western Blotting (WB)

Product Details

Immunogen:	KLH conjugated synthetic peptide between 66-95 amino acids from the Central region of human SULT1A3
Isotype:	Ig Fraction
Specificity:	This antibody reacts to SULT1A3.
Cross-Reactivity (Details):	Species reactivity (tested):Human.
Purification:	Affinity chromatography on Protein A

Target Details

Target:	SULT1A3/1A4
Alternative Name:	SULT1A3/1A4 (SULT1A3/1A4 Products)

Target Details

Background: Sulfotransferase enzymes catalyze the sulfate conjugation of many hormones, neurotransmitters, drugs, and xenobiotic compounds. These cytosolic enzymes are different in their tissue distributions and substrate specificities. The gene structure (number and length of exons) is similar among family members. This gene encodes a phenol sulfotransferase with thermolabile enzyme activity. Four sulfotransferase genes are located on the p arm of chromosome 16, this gene and SULT1A4 arose from a segmental duplication. This gene is the most centromeric of the four sulfotransferase genes. Read-through transcription exists between this gene and the upstream SLX1A (SLX1 structure-specific endonuclease subunit homolog A) gene that encodes a protein containing GIY-YIG domains. Synonyms: Aryl sulfotransferase 1A3/1A4, Catecholamine-sulfating phenol sulfotransferase, HAST3, M-PST, Monoamine-sulfating phenol sulfotransferase, Placental estrogen sulfotransferase, ST1A3/ST1A4, STM, SULT1A3, SULT1A4, Sulfotransferase monoamine-preferring, TL-PST, Thermolabile phenol sulfotransferase

Molecular Weight: 34196 Da

Gene ID: 445329

NCBI Accession: [NP_001017390](#)

Application Details

Application Notes: Optimal working dilution should be determined by the investigator.

Restrictions: For Research Use only

Handling

Format: Liquid

Concentration: 0.25 mg/mL

Buffer: PBS, 0.09 % (W/V) sodium azide

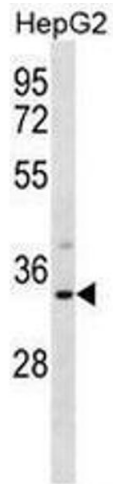
Preservative: Sodium azide

Precaution of Use: This product contains sodium azide: a POISONOUS AND HAZARDOUS SUBSTANCE which should be handled by trained staff only.

Handling Advice: Avoid repeated freezing and thawing.

Storage: 4 °C/-20 °C

Storage Comment: Store the antibody undiluted at 2-8 °C for one month or (in aliquots) at -20 °C for longer.



Western Blotting

Image 1. SULT1A3 Antibody (Center) western blot analysis in HepG2 cell line lysates (35µg/lane). This demonstrates the SULT1A3 antibody detected the SULT1A3 protein (arrow).